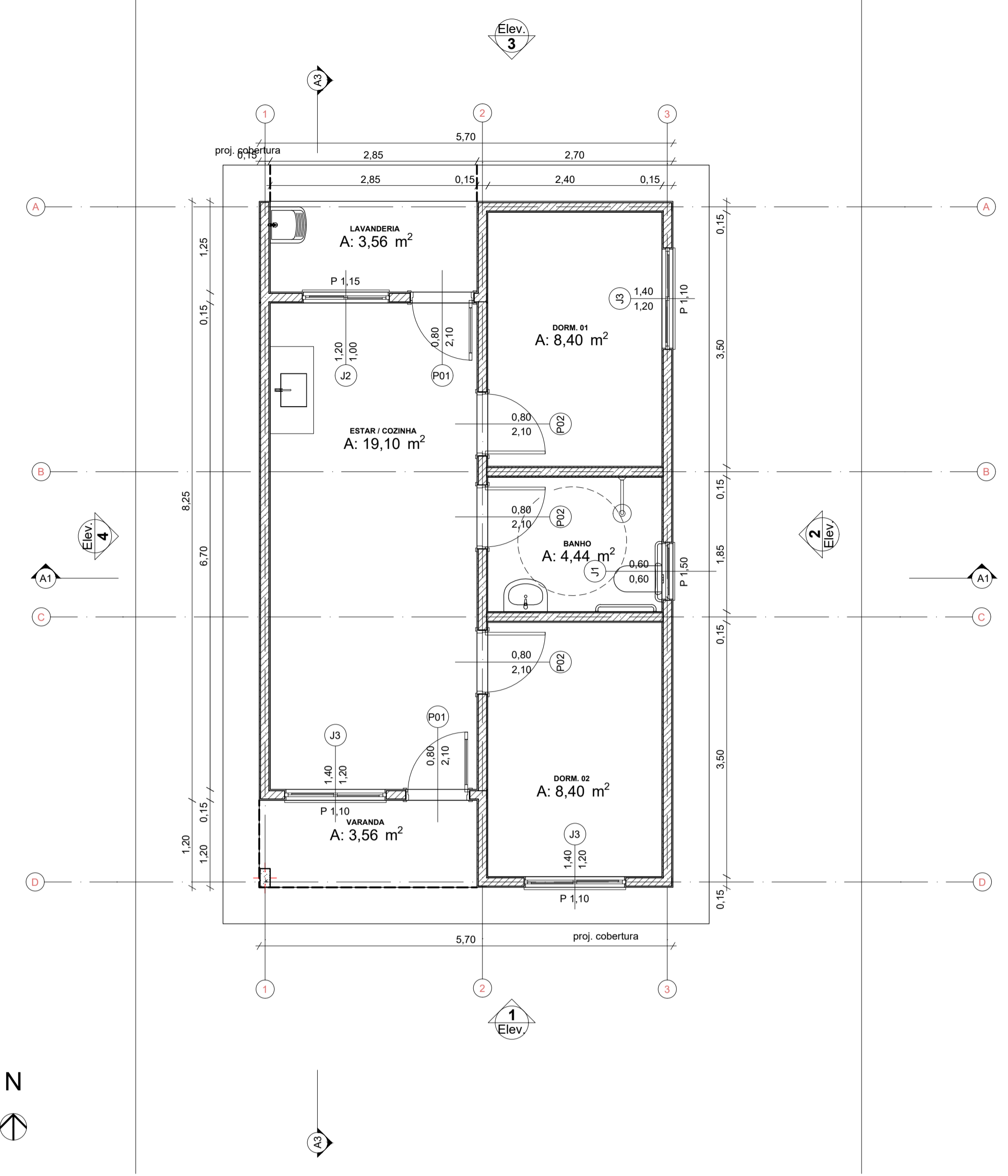
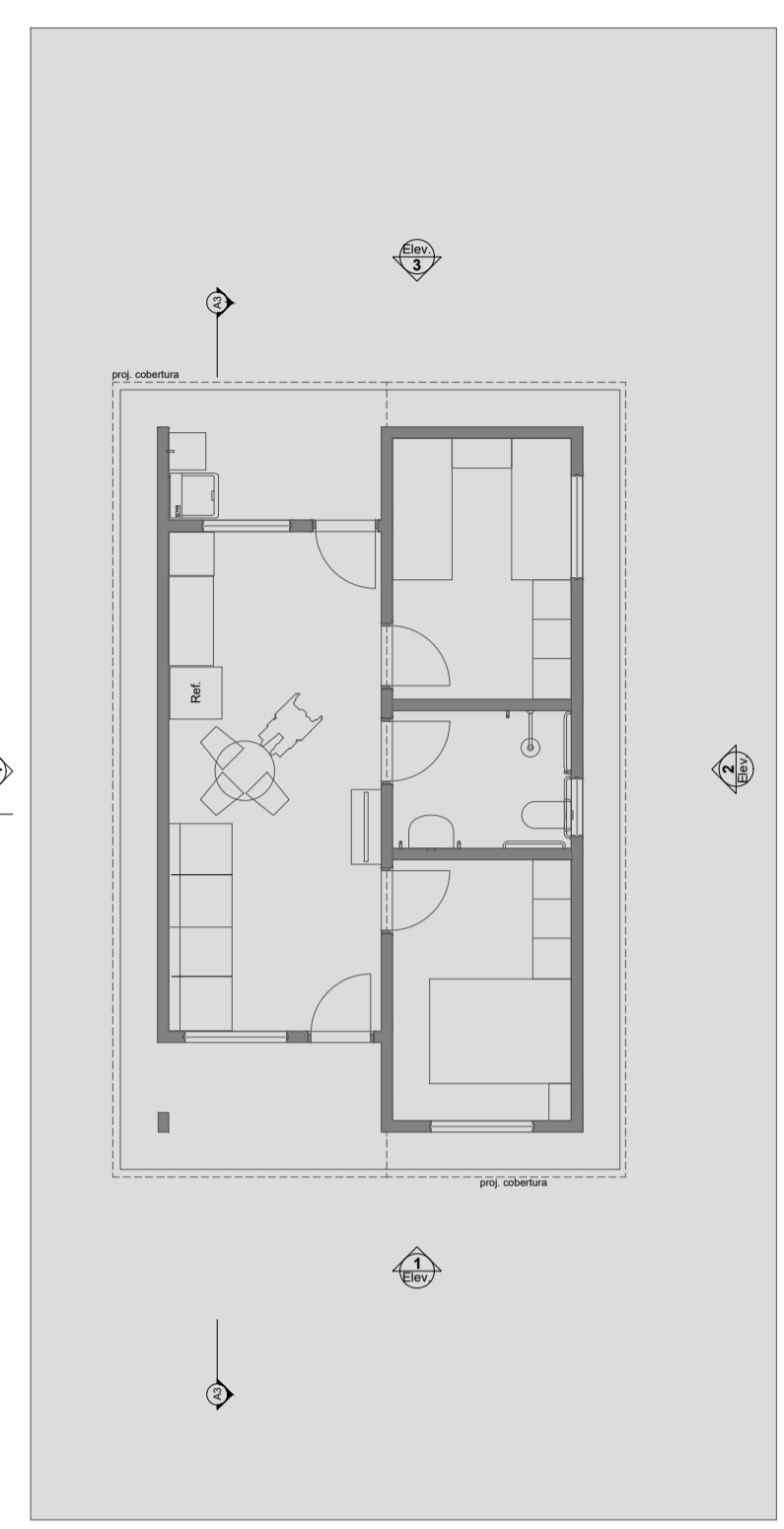


REV.	DESCRIÇÃO	MODIFICADO POR	DATA

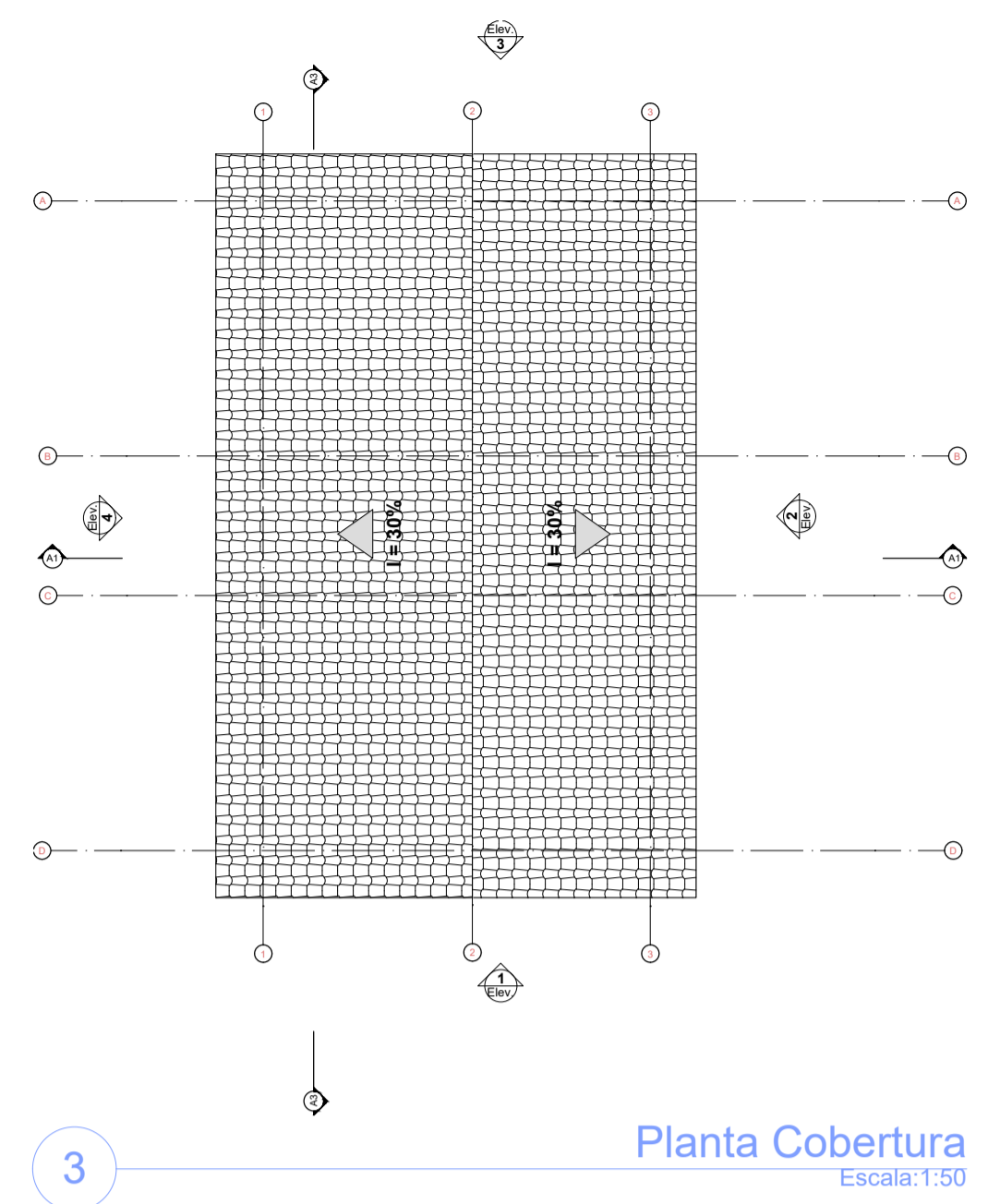
Quadro de Areas			
Piso de Origem	Cômodo	Área Medida	
Nível 0,00	01	ESTAR / COZINHA	19,10
	02	DORM. 01	8,40
	03	BANHO	4,44
	04	DORM. 02	8,40
	05	VARANDA	3,56
	06	LAVANDERIA	3,56
		Total	47,46 m²



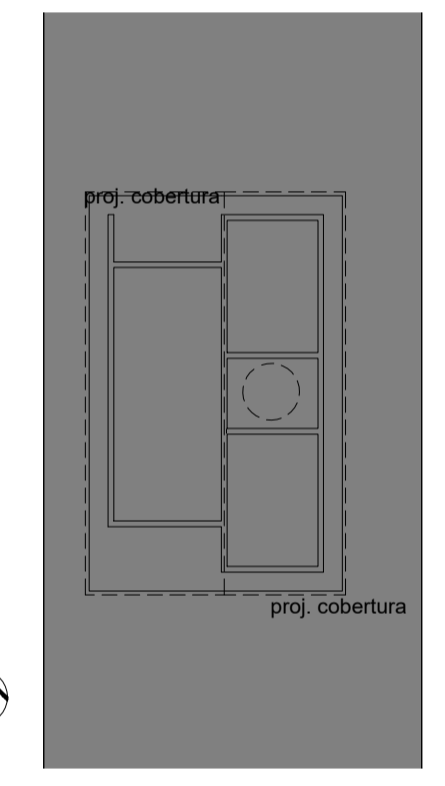
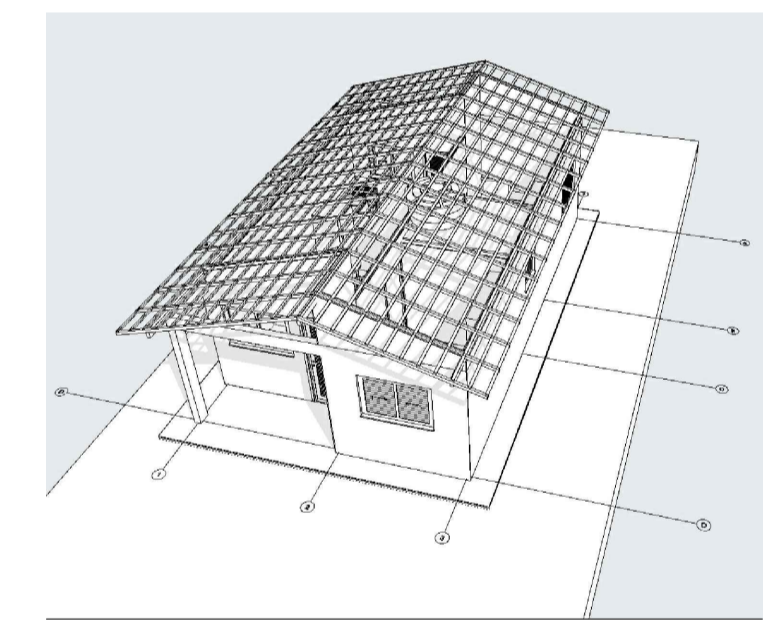
0 Planta Térreo
Escala: 1:50



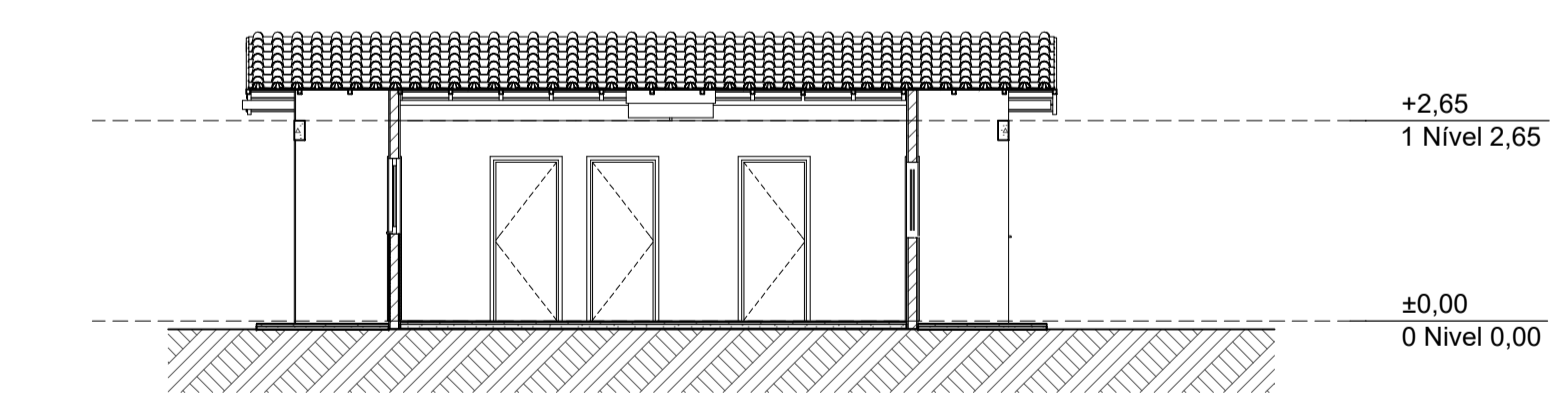
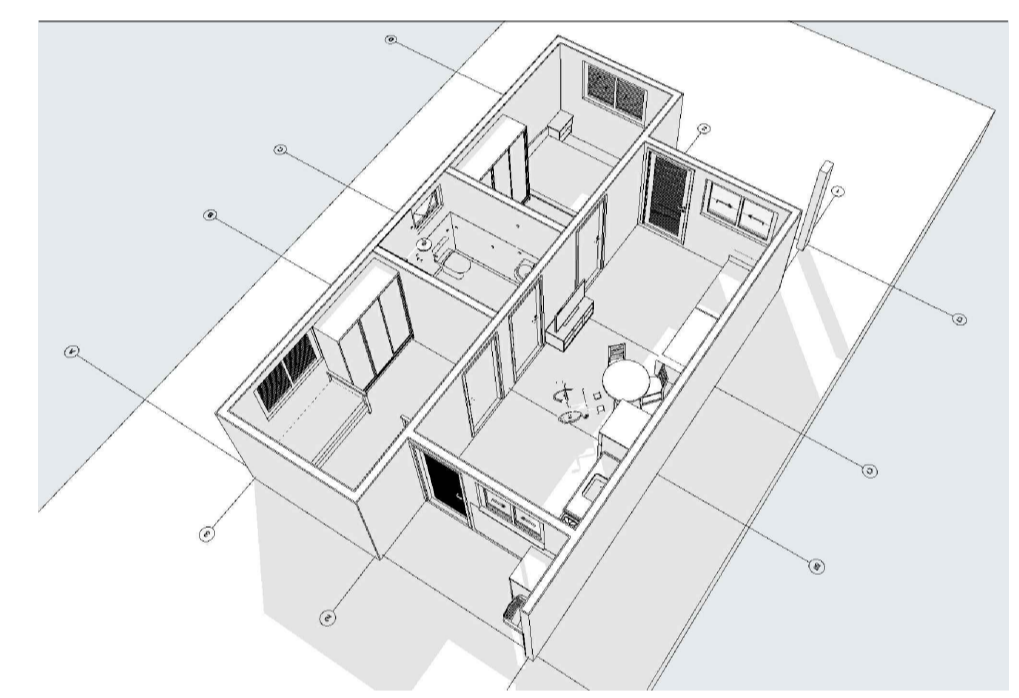
1 LAYOUT
Escala: 1:100



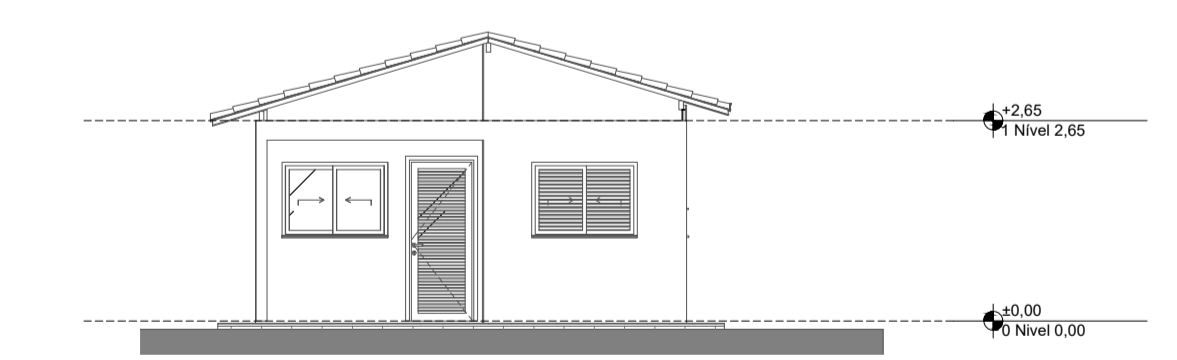
3 Planta Cobertura
Escala: 1:50



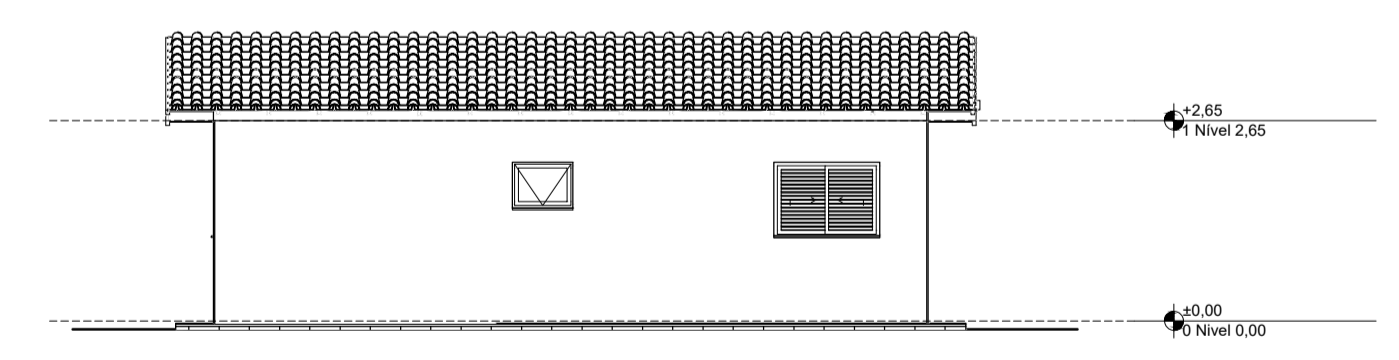
2 Implantação
Escala: 1:200



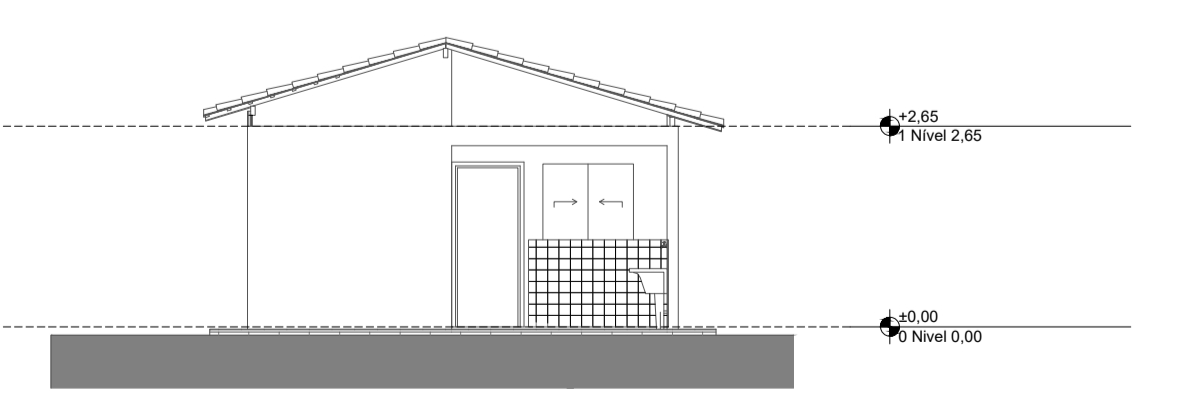
A3 Corte
Escala: 1:100



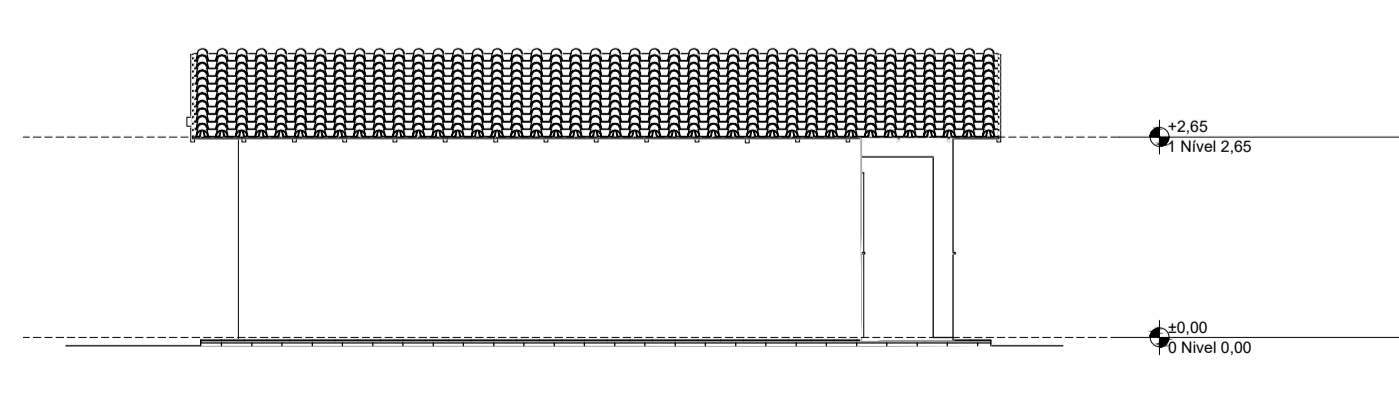
1 Elevação Frontal
Escala: 1:100



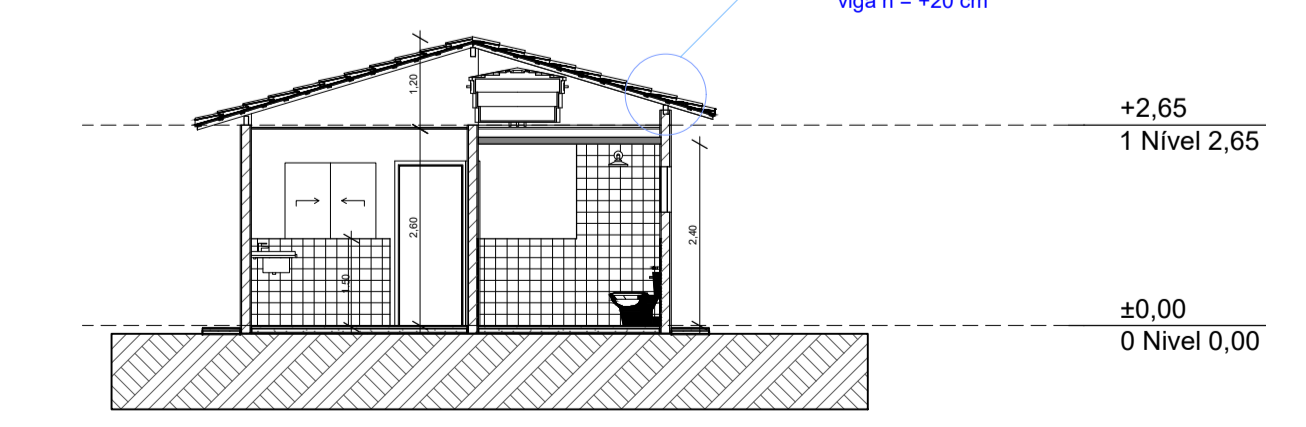
2 Lateral Direita
Escala: 1:100



3 Elevação Posterior
Escala: 1:100



4 Lateral Esquerda
Escala: 1:100



A1 Corte
Escala: 1:100

PROJETO
FNHIS SUB-50

ENDEREÇO:
Rua "A", Esquina Rua Presidente Kennedy - Bairro Canela

CIDADE: Alecrim ESTADO: RS

CLIENTE: MUNICÍPIO DE ALECRIM

ENGENHEIRO: Elton Luis Cagliari
CREA-RS 102.506

FASE PROJETO: Projeto Inicial - Referência ESCALA: 1/50 DIMENSÃO DA FOLHA: A1

CONTEÚDO: Projeto Arquitetônico

RESPONSÁVEL TÉCNICO: Elton Luis Cagliari DATA: 01/08/2025

ARQUIVO DIGITAL: San FNHIS SUB50.dwg REVISÃO: Rev.0