



1 REGISTRO FOTOGRÁFICO - 1



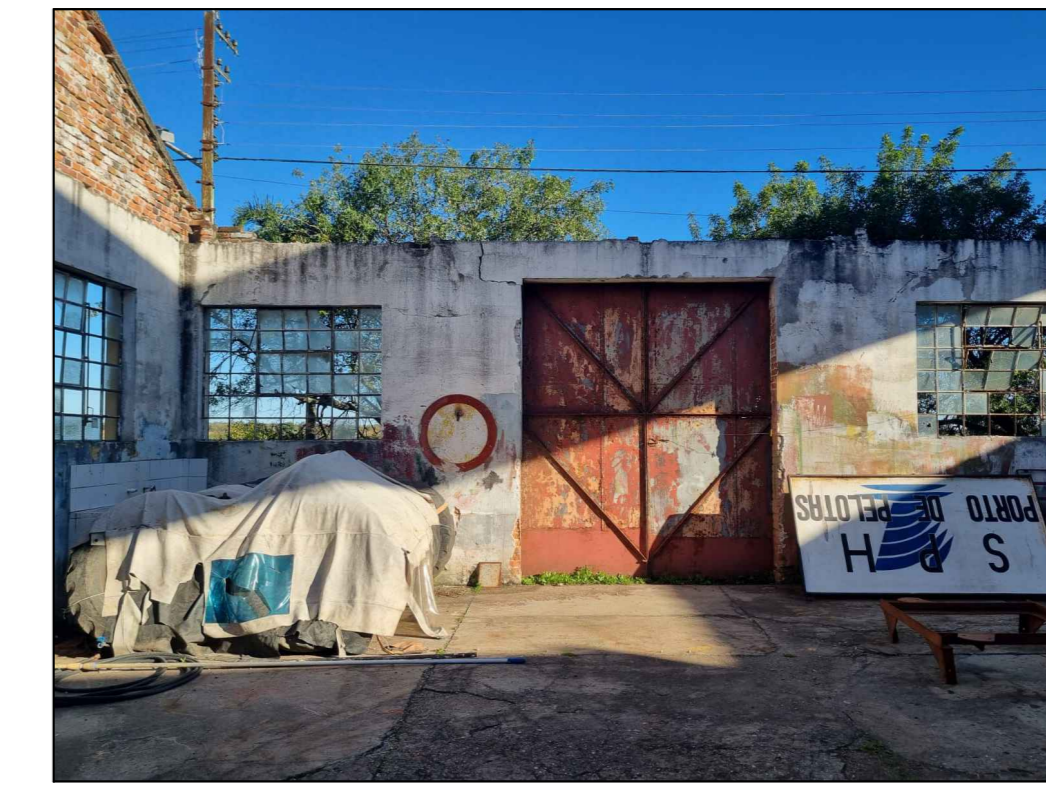
2 REGISTRO FOTOGRÁFICO - 2



3 REGISTRO FOTOGRÁFICO - 2



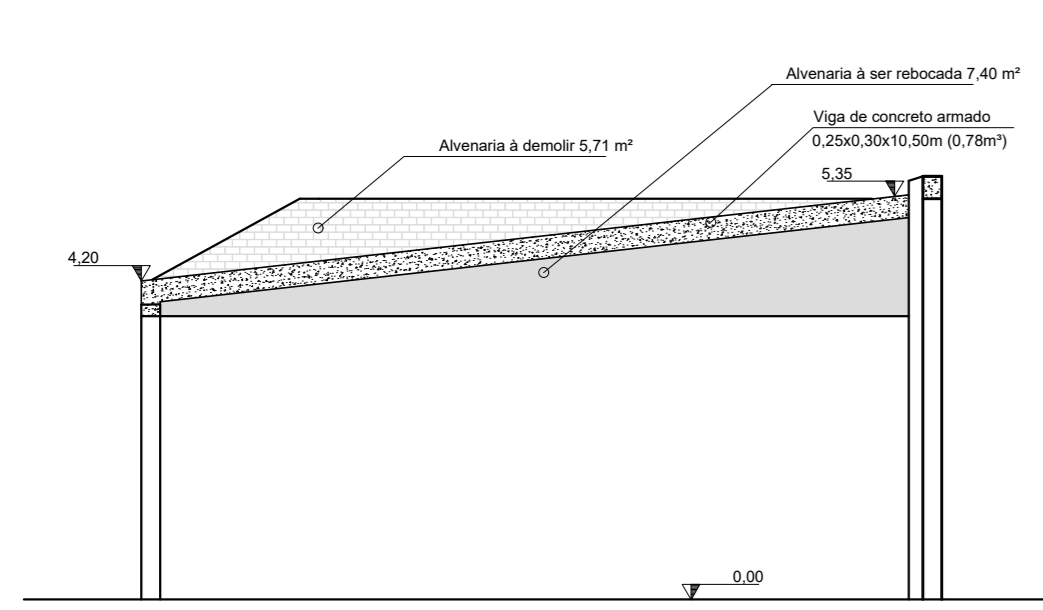
4 REGISTRO FOTOGRÁFICO - 2



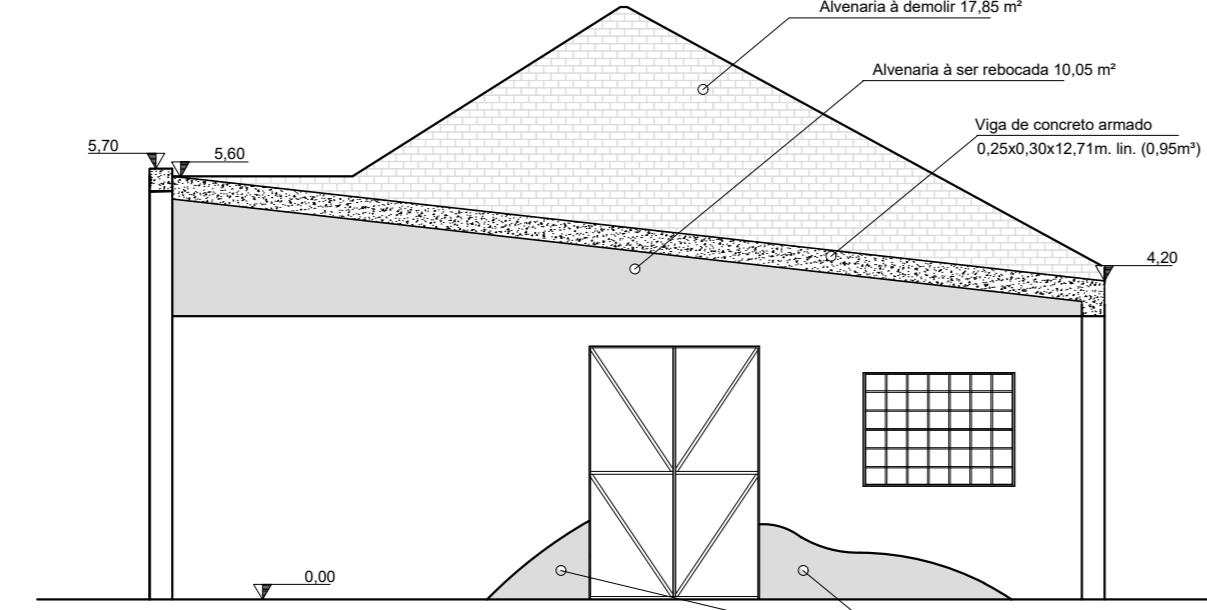
5 REGISTRO FOTOGRÁFICO - 2



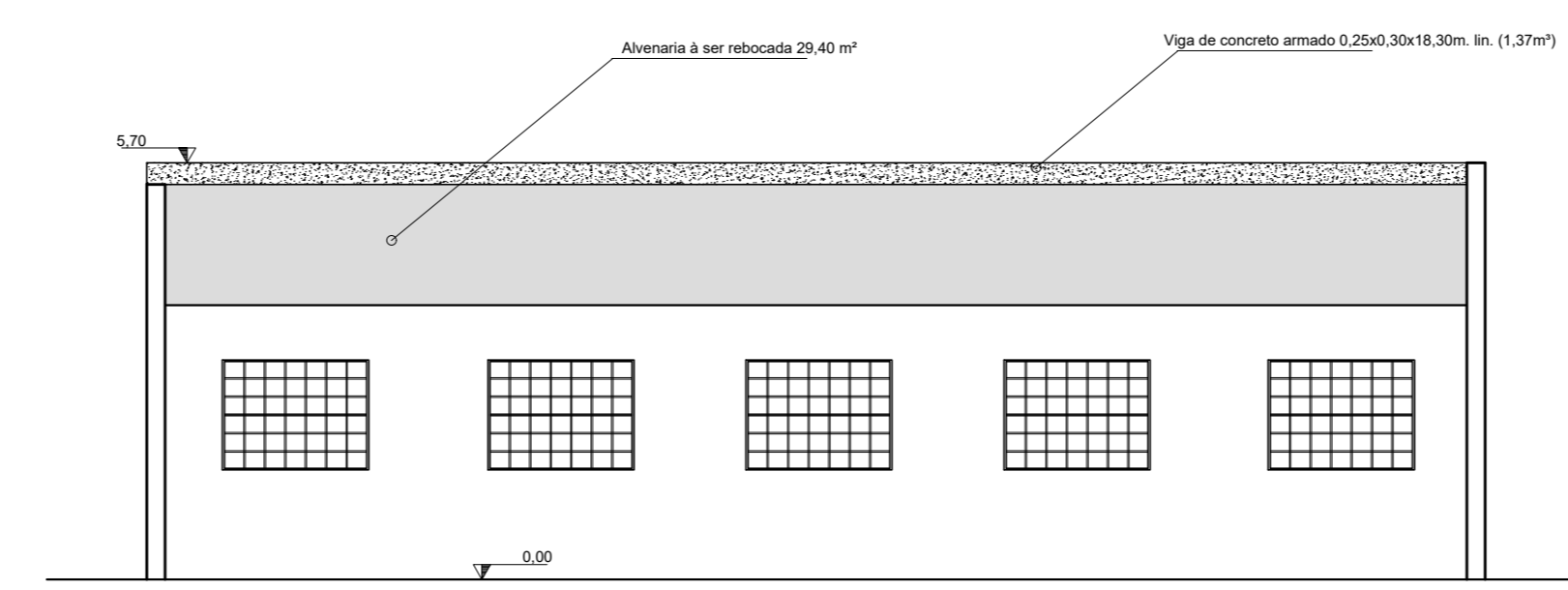
6 REGISTRO FOTOGRÁFICO - 2



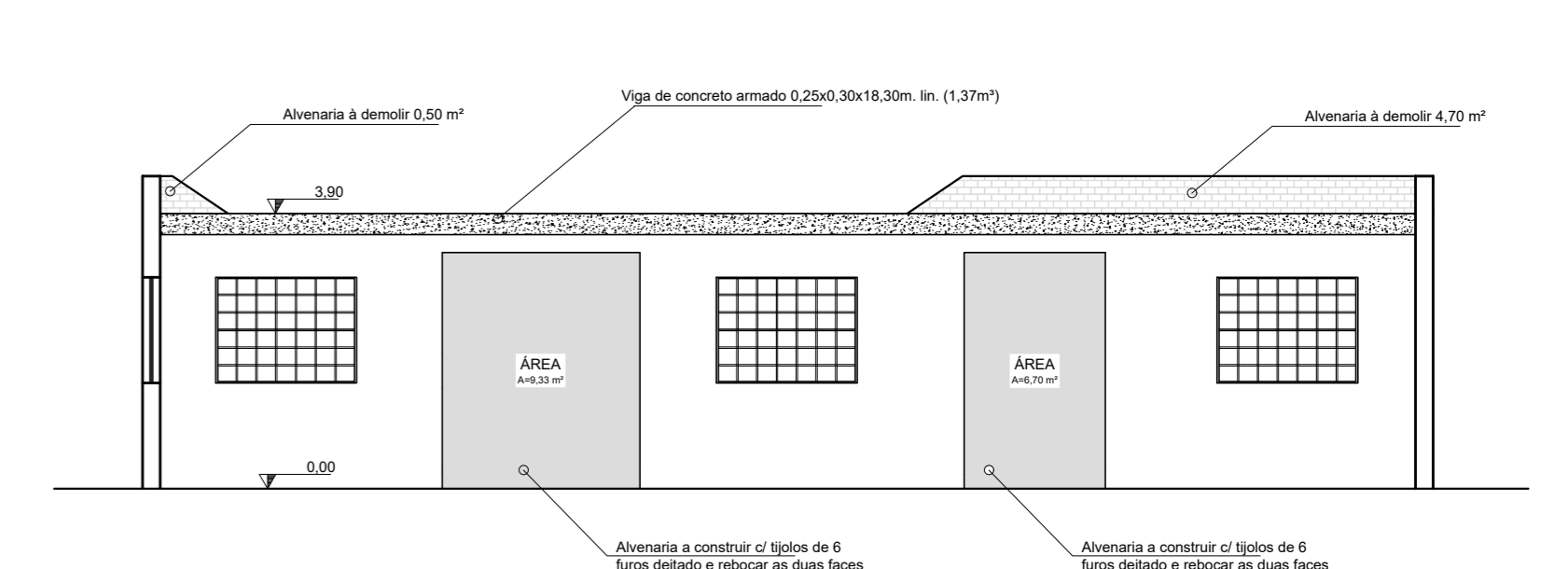
7 EXECUTIVO CORTE A-A



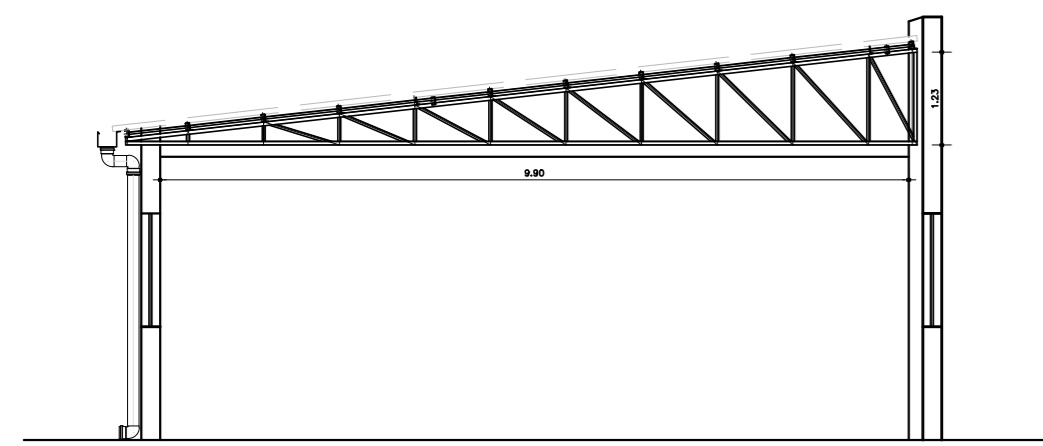
8 EXECUTIVO CORTE B-B



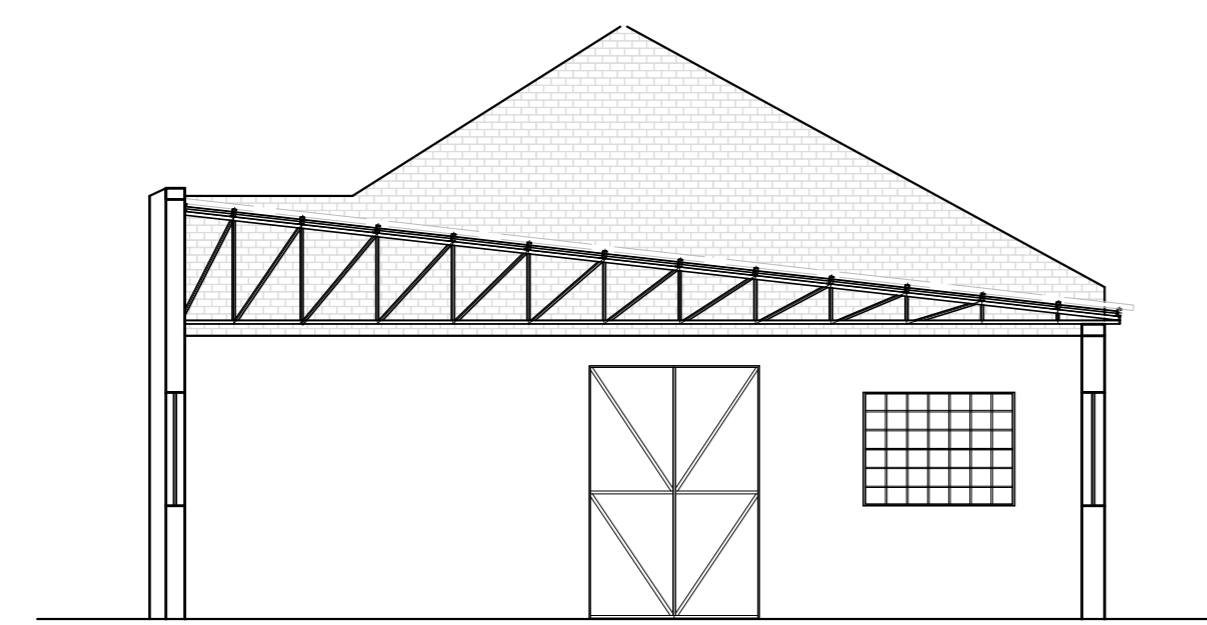
9 EXECUTIVO CORTE C-C



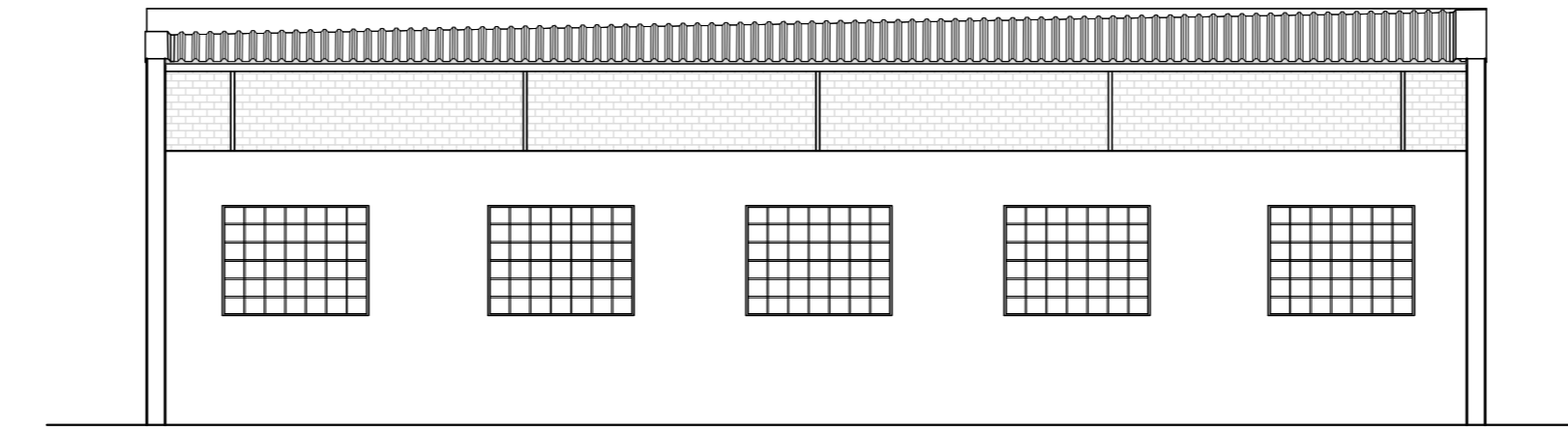
10 EXECUTIVO CORTE D-D



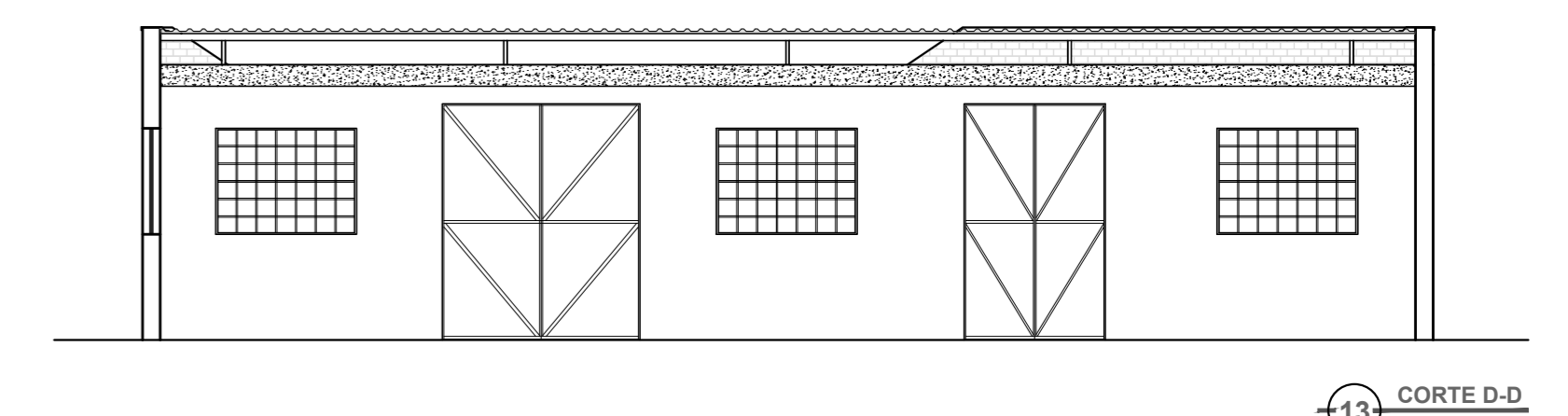
11 CORTE A-A



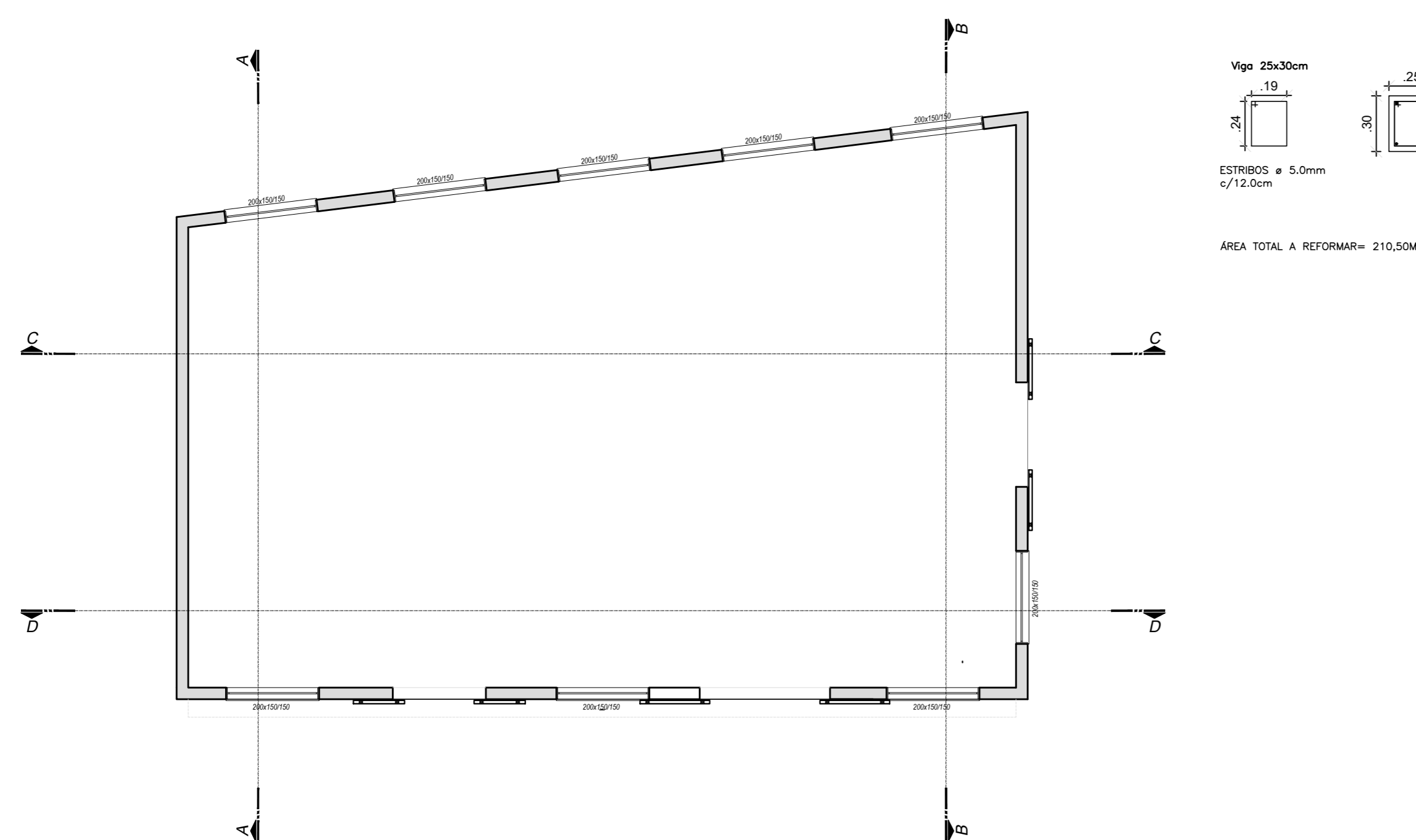
12 CORTE B-B



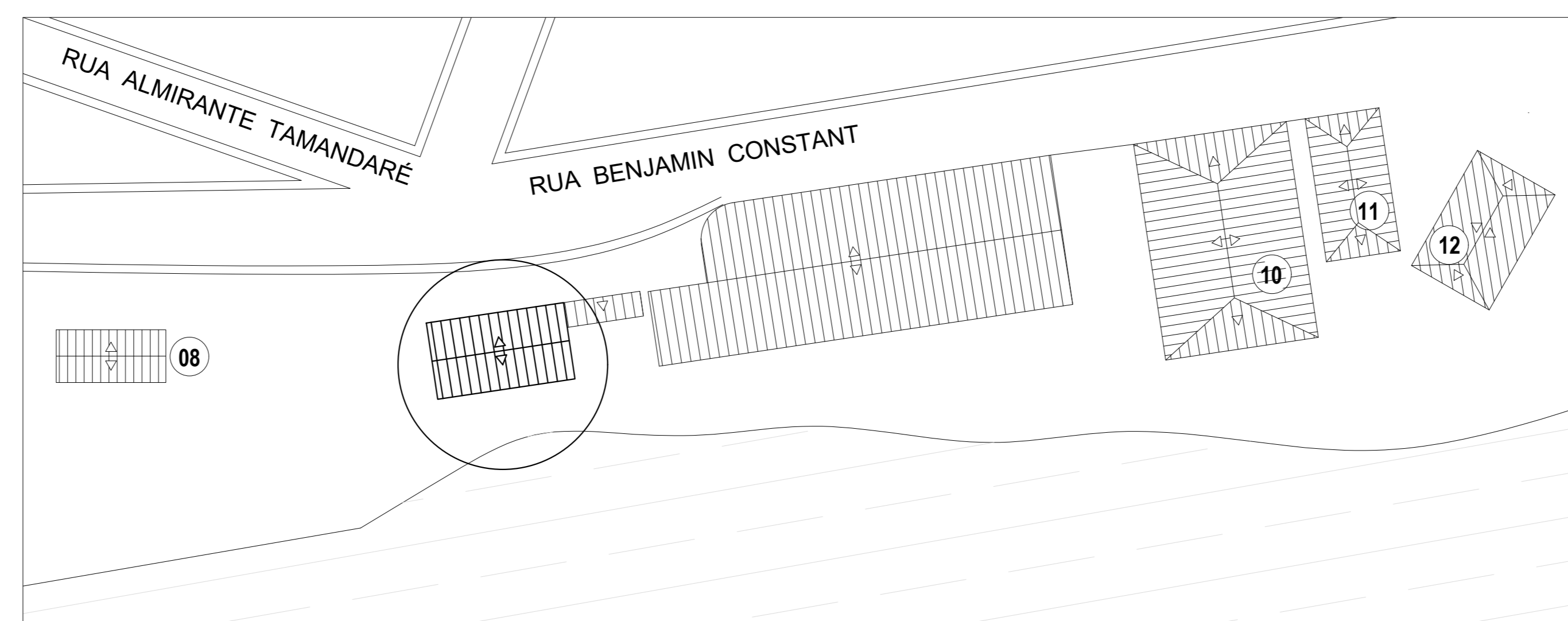
12 CORTE C-C



13 CORTE D-D



13 PLANTA BAIXA



14 PLANTA DE SITUAÇÃO

REVISÃO Nº 00	DATA 13/04/2026	DESCRIÇÃO
 Estado do Rio Grande do Sul		
RO GRANDE /RS	AVENIDA HENRIQUE BICALHUS SIN	
OBJETO	PROJETO DE REFORMA DO PRÉDIO NOVO ALMOXARIFADO	
ENDEREÇO	PORTO DE PELOTAS R. BENJAMIN CONSTANT Nº 701	
DESENHO	REFORMA - ALMOXARIFADO	
ESCALA	INDICADA DATA ABRIL/2026	PROJETA DINFRA/ALMOX 001 VERSÃO 1.0
DESENHO	GABRIEL B. B. DA SILVEIRA	SUPERVISÃO MARCOS SONDA TORMEN
ANALISADO	DINFRA-PEL-ALMOX-01	SETOR DINFRA
PORTOS RS - AUTORIDADE PORTUÁRIA <small>AVENIDA HENRIQUE BICALHUS SIN - 91100-000 - PELOTAS - RS</small>		ENR - INGO COLPOMACE MATOS <small>AVENIDA HENRIQUE BICALHUS SIN - 91100-000 - PELOTAS - RS</small>