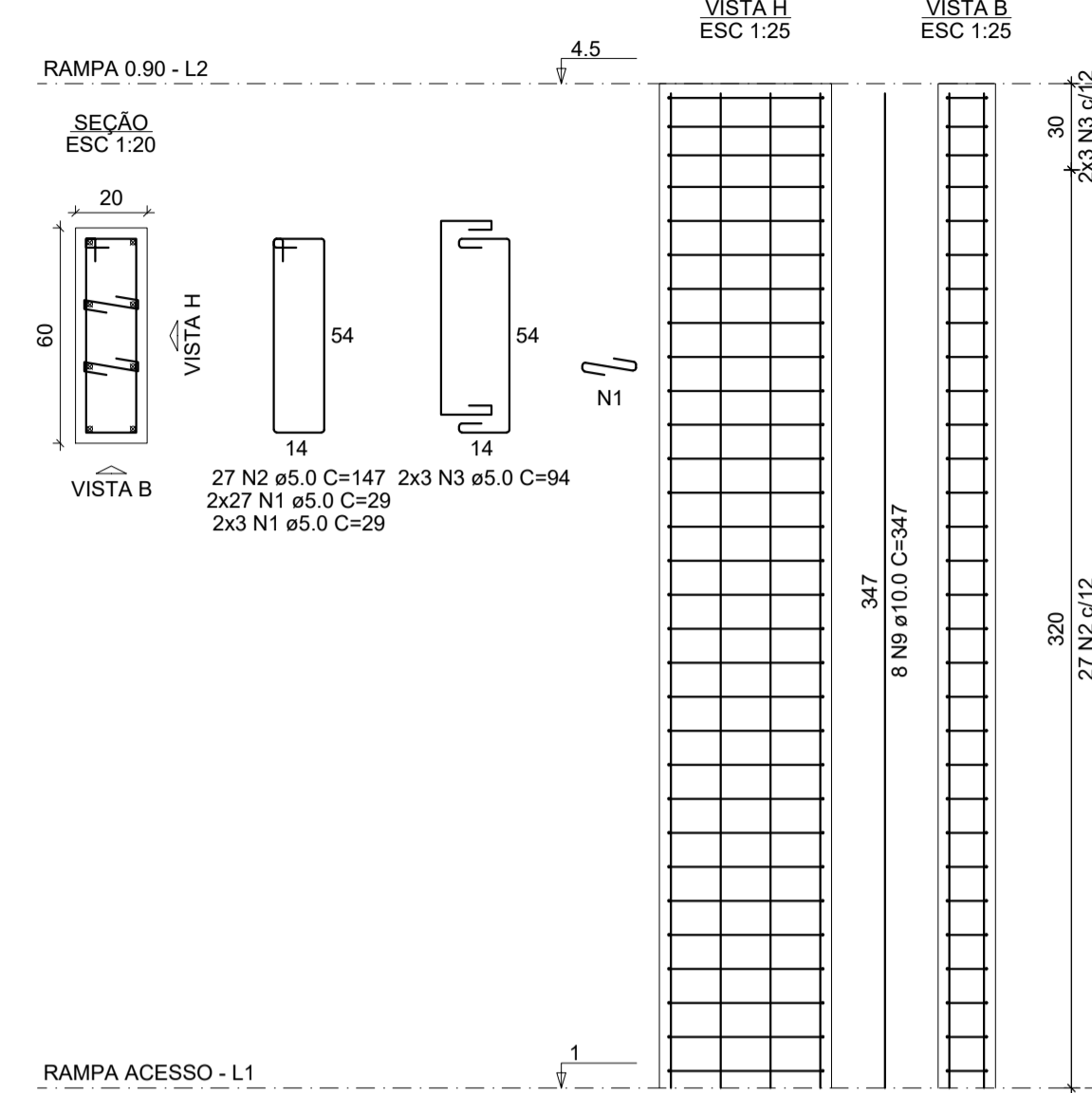
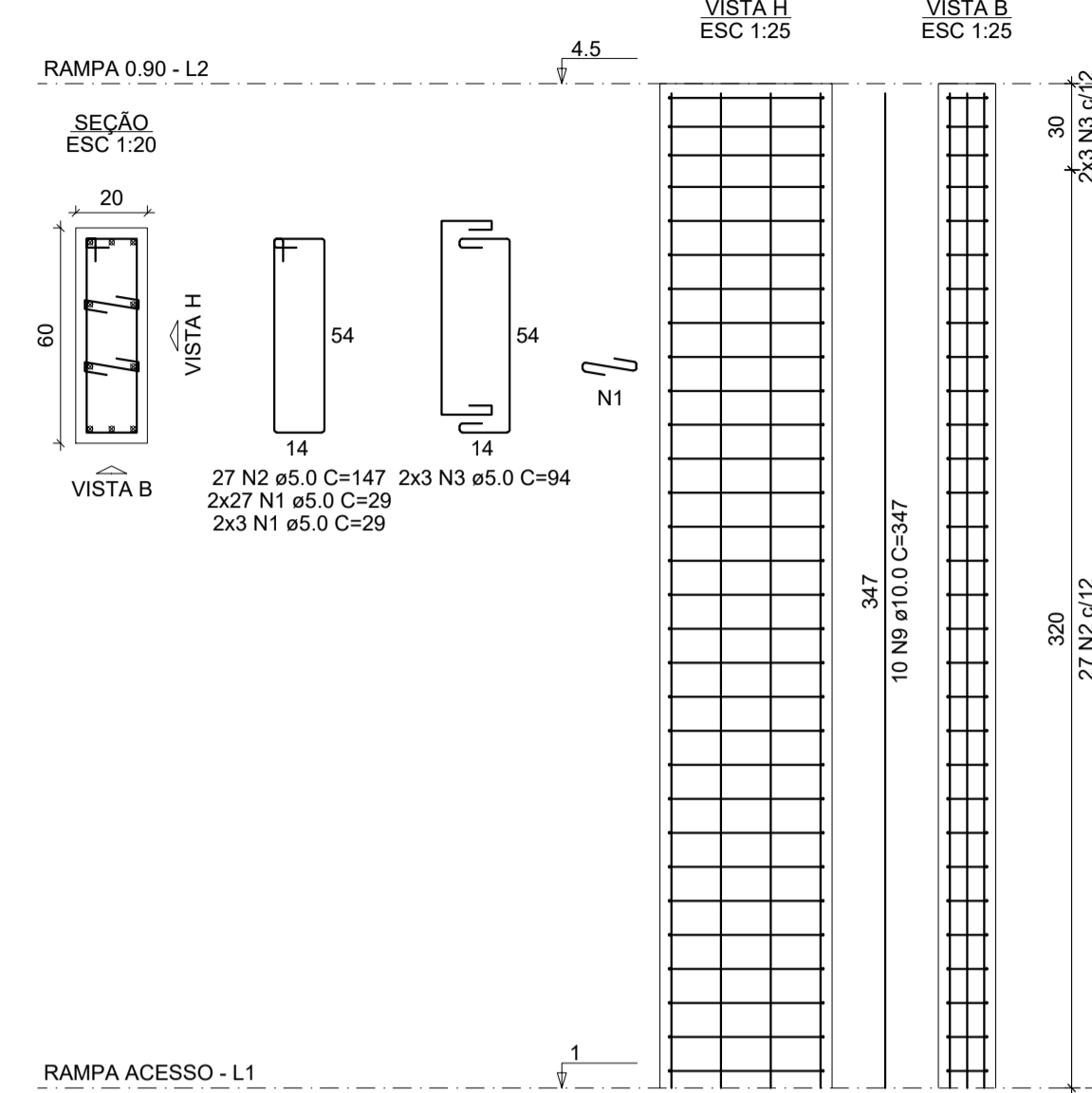


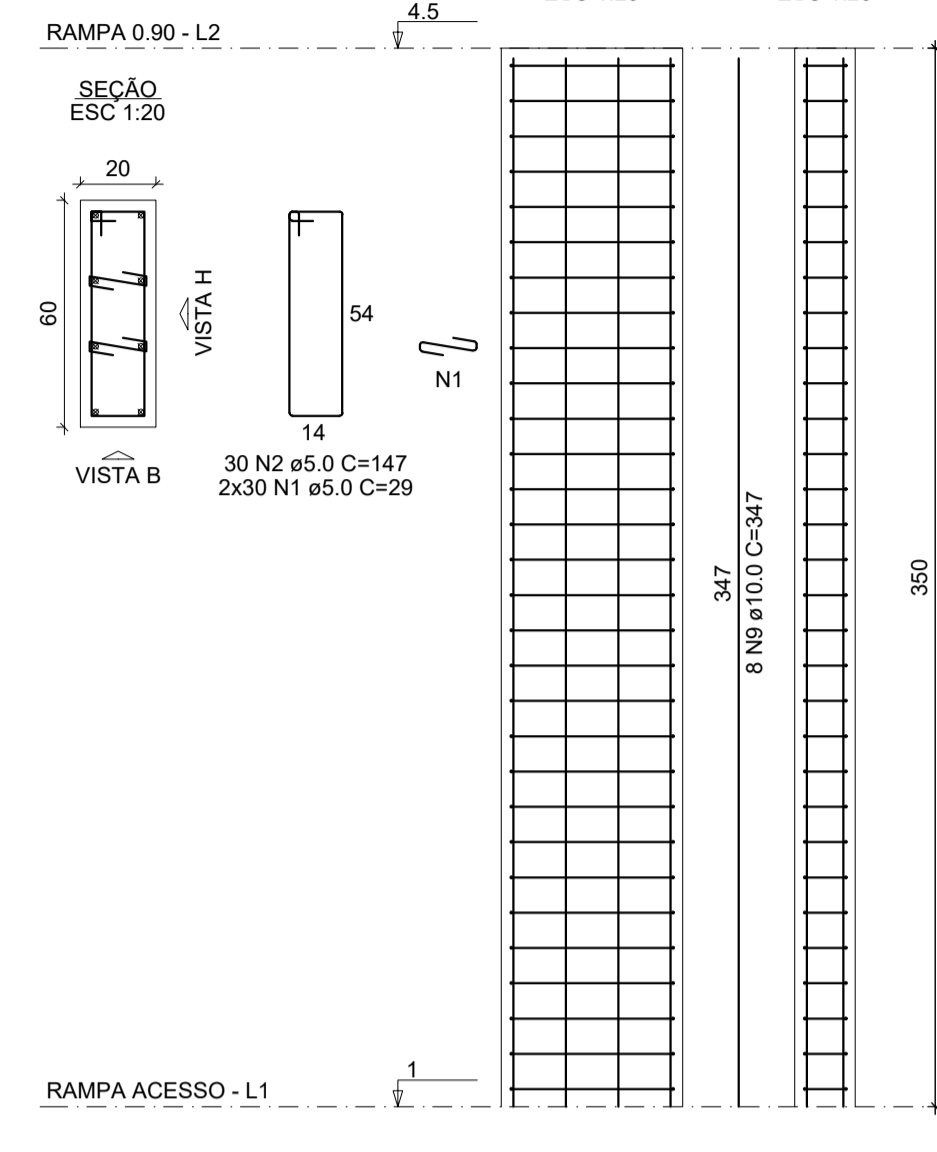
P1=P2=P3=P8



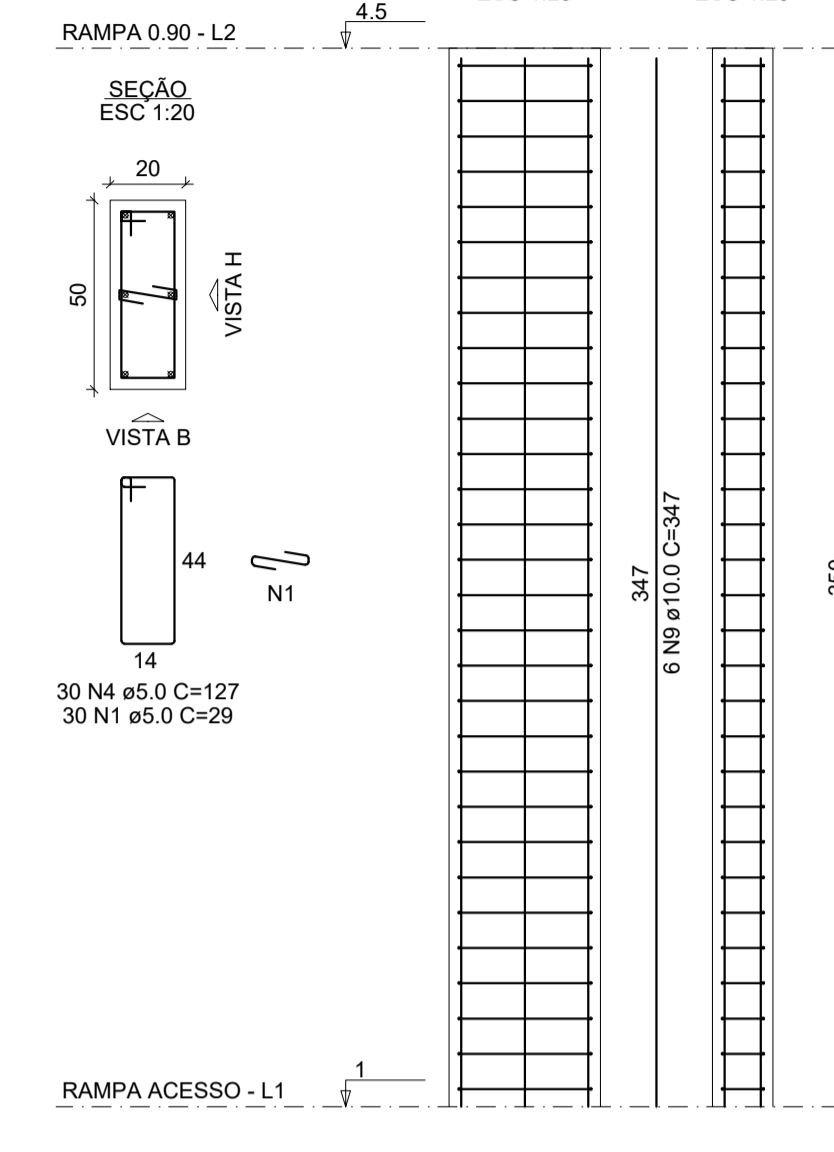
P4=P5=P6=P7



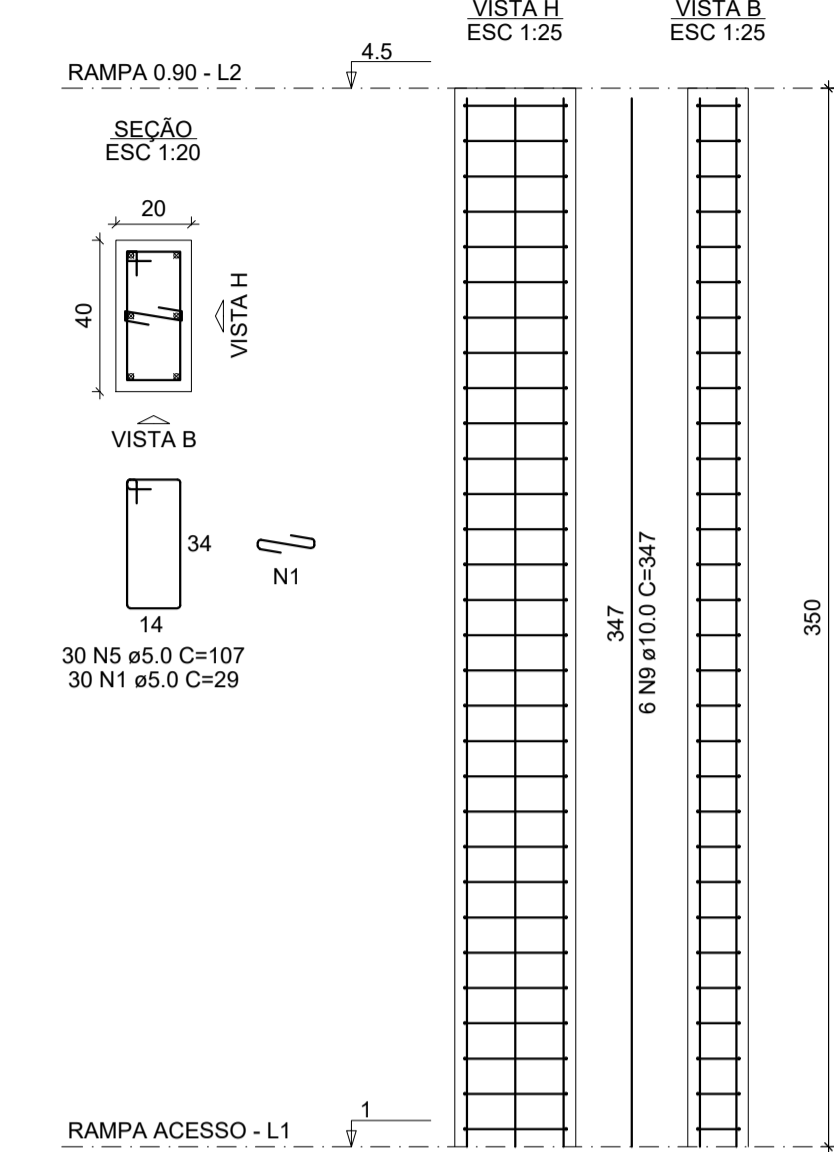
P9=P10



P11



P12=P13=P14=P15



RELAÇÃO DO AÇO

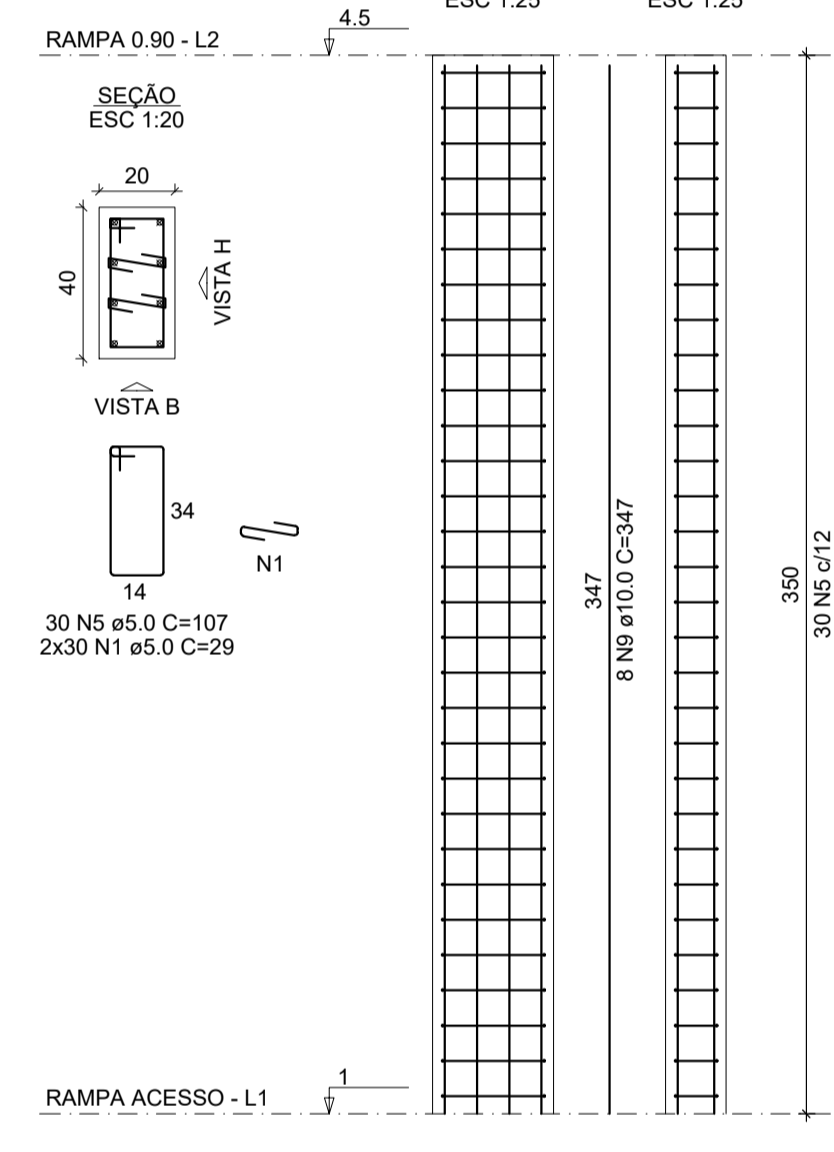
AÇO	N	DIAM (mm)	QUANT	C. UNIT (cm)	C. TOTAL (cm)
CA60	1	5.0	870	29	25230
	2	5.0	276	147	40572
	3	5.0	48	94	4512
	4	5.0	30	127	3810
	5	5.0	150	107	16050
	6	5.0	659	87	57333
	7	5.0	38	64	2432
	8	5.0	155	29	4485
	9	10.0	138	347	47886
	10	10.0	32	363	11616
	11	10.0	4	366	1464
	12	12.5	72	347	24984

RESUMO DO AÇO

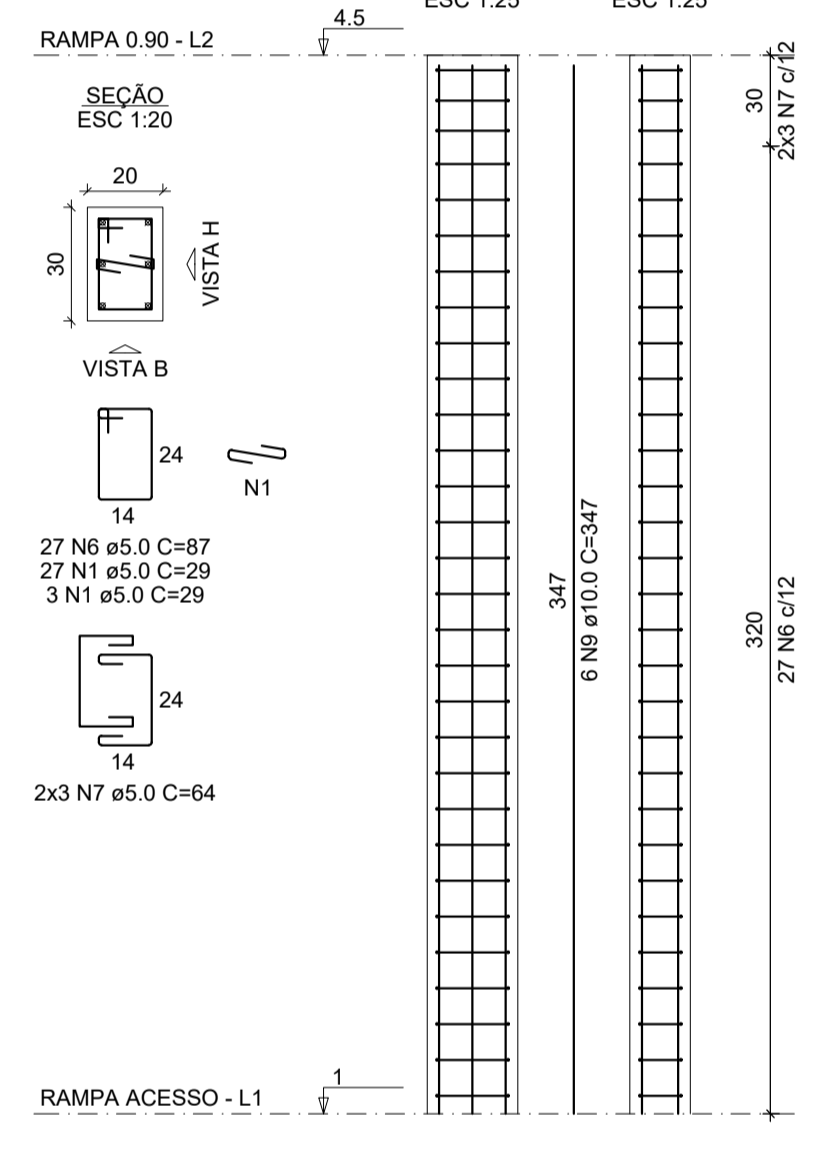
AÇO	DIAM (mm)	C. TOTAL (m)	PESO + 10% (kg)
CA50	10.0	609.7	413.5
CA60	12.5	249.8	264.7
CA60	5.0	1544.3	261.8
PESO TOTAL (kg)			
CA50		678.2	
CA60		261.8	

Volume de concreto (C-25) = 11.08 m³
 Área de forma = 167.45 m²

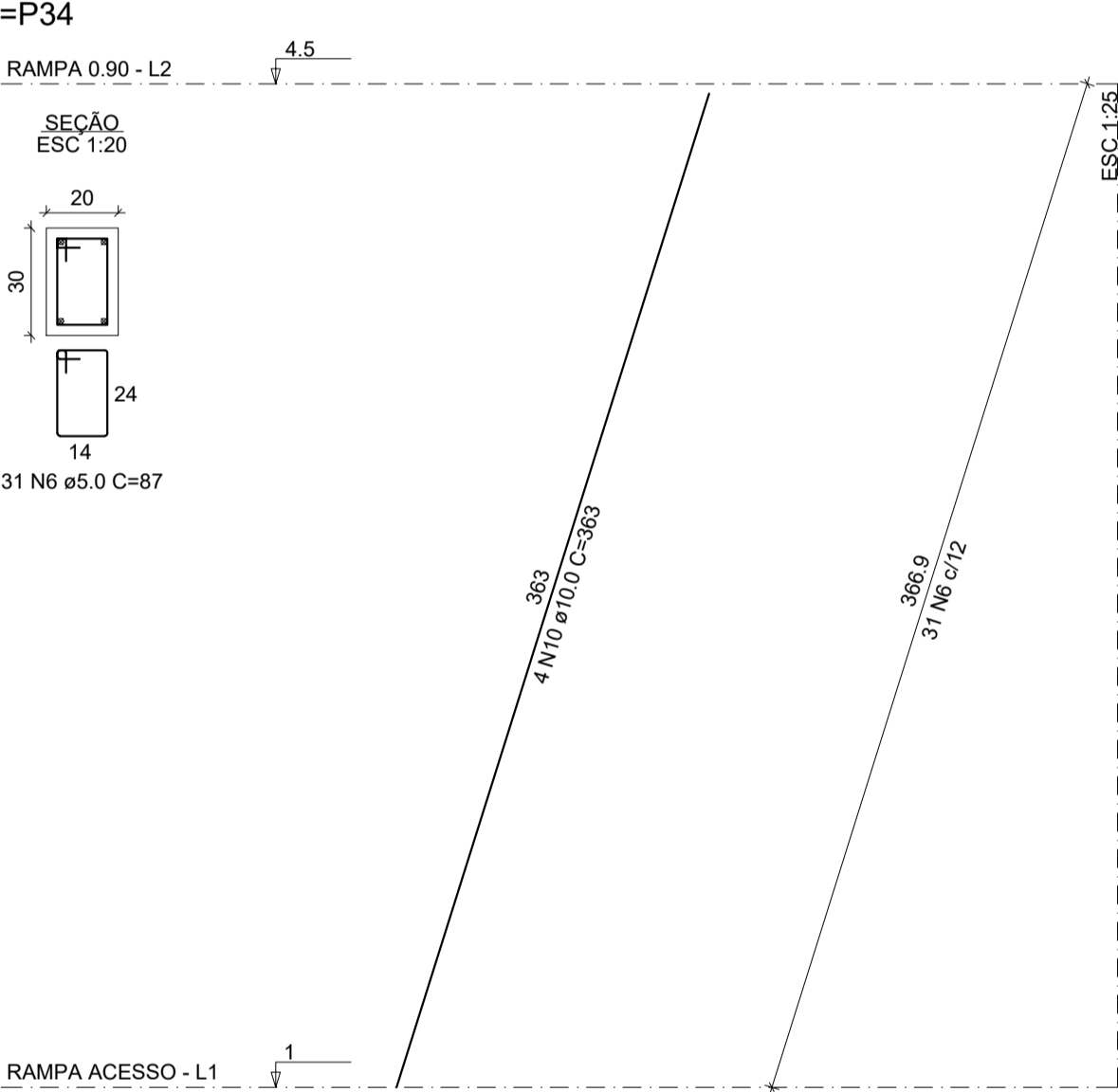
P16



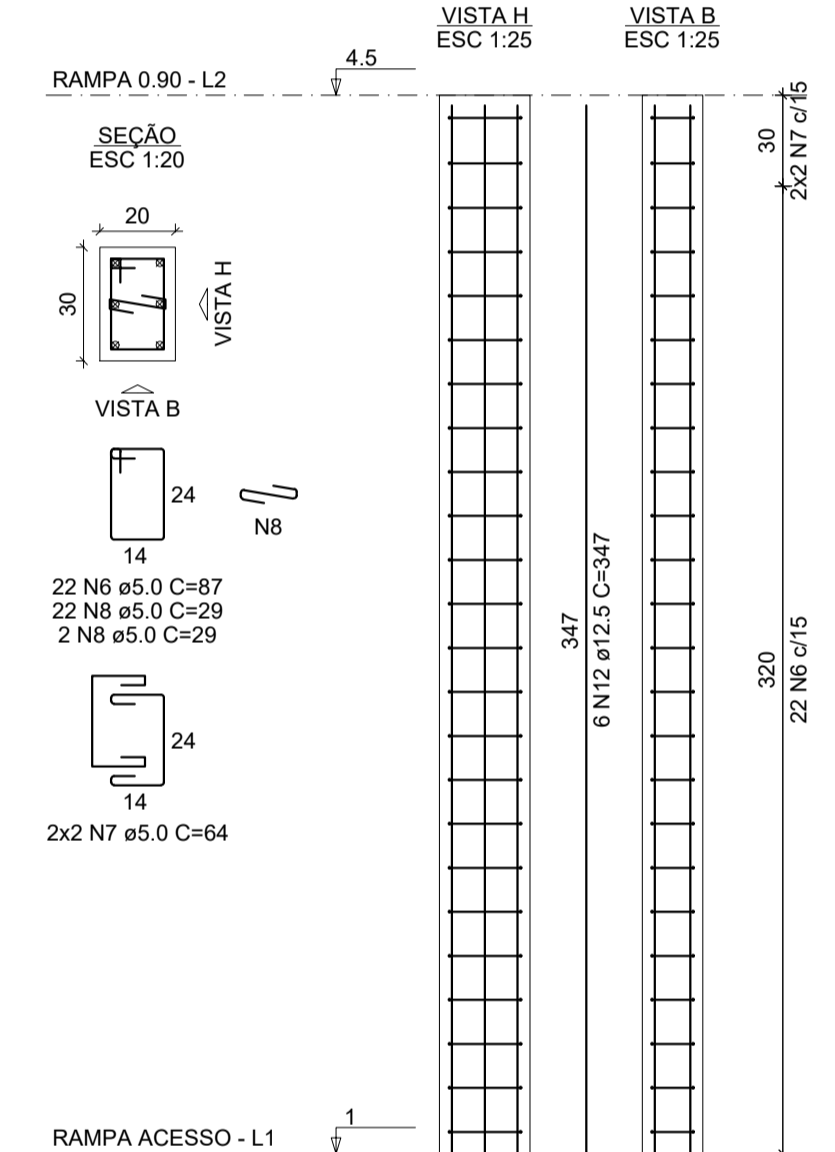
P17



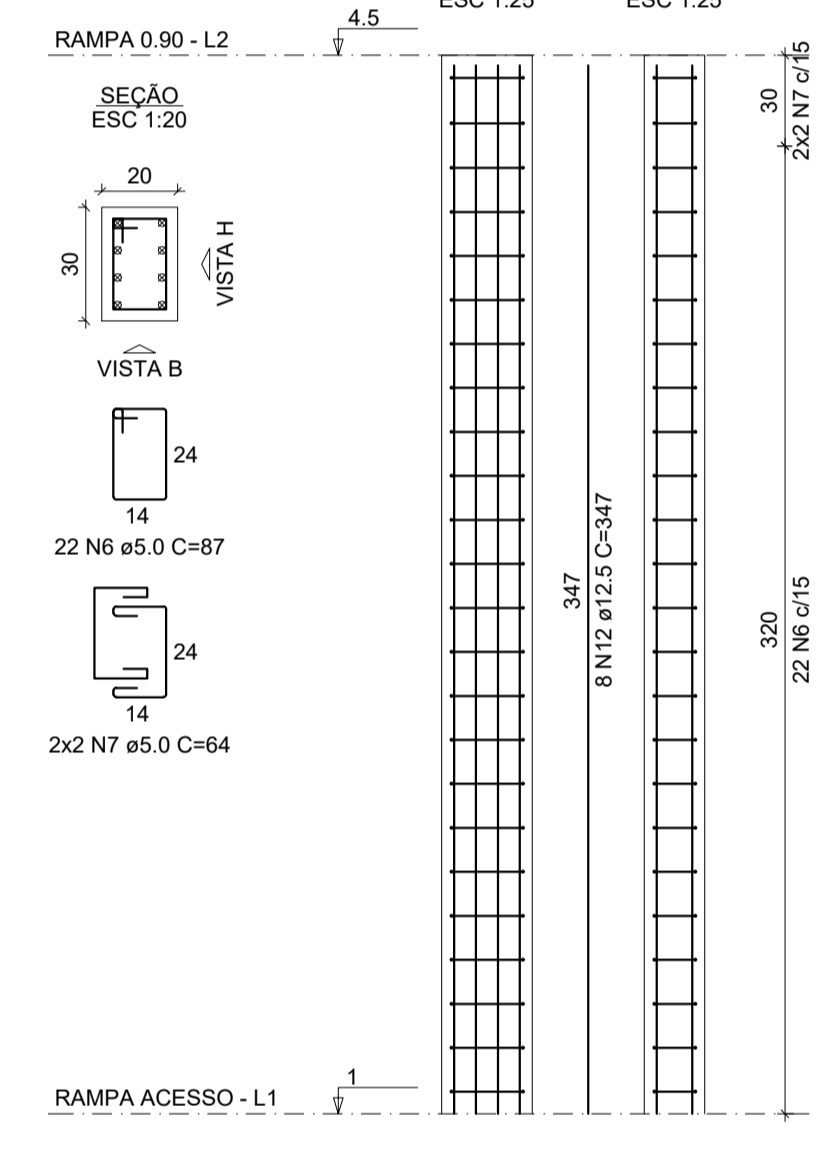
P18=P20=P22=P24=P26=P28=P30=P34



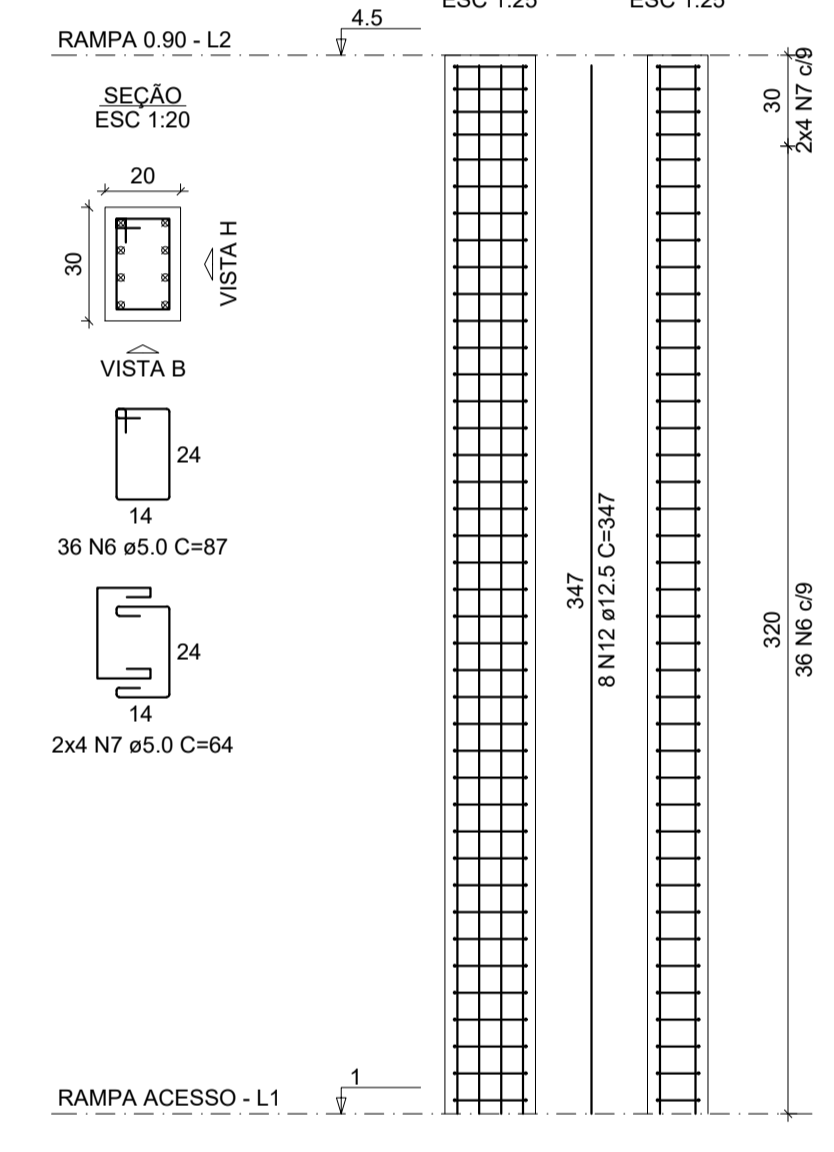
P19=P21=P23=P25=P27



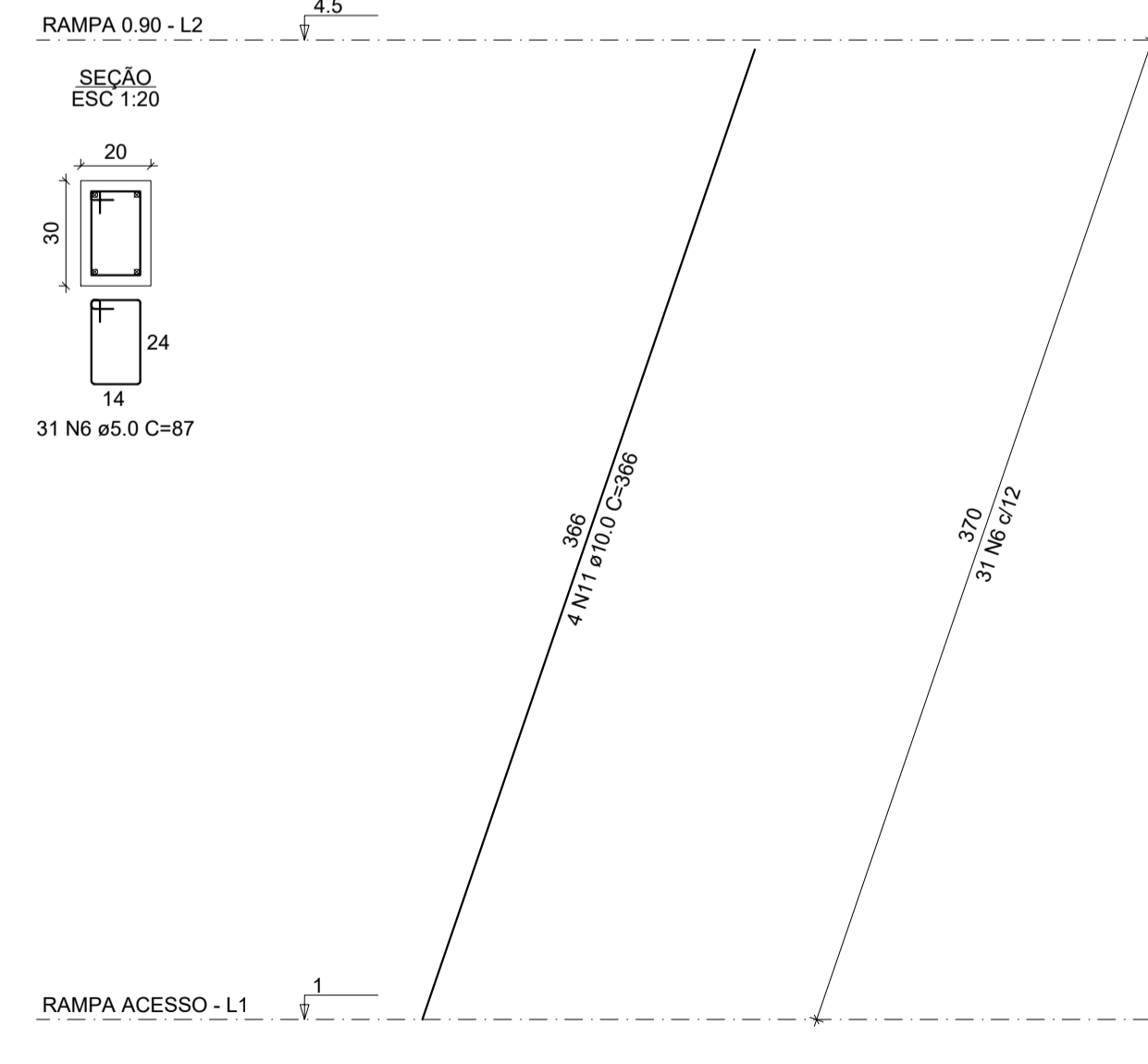
P29



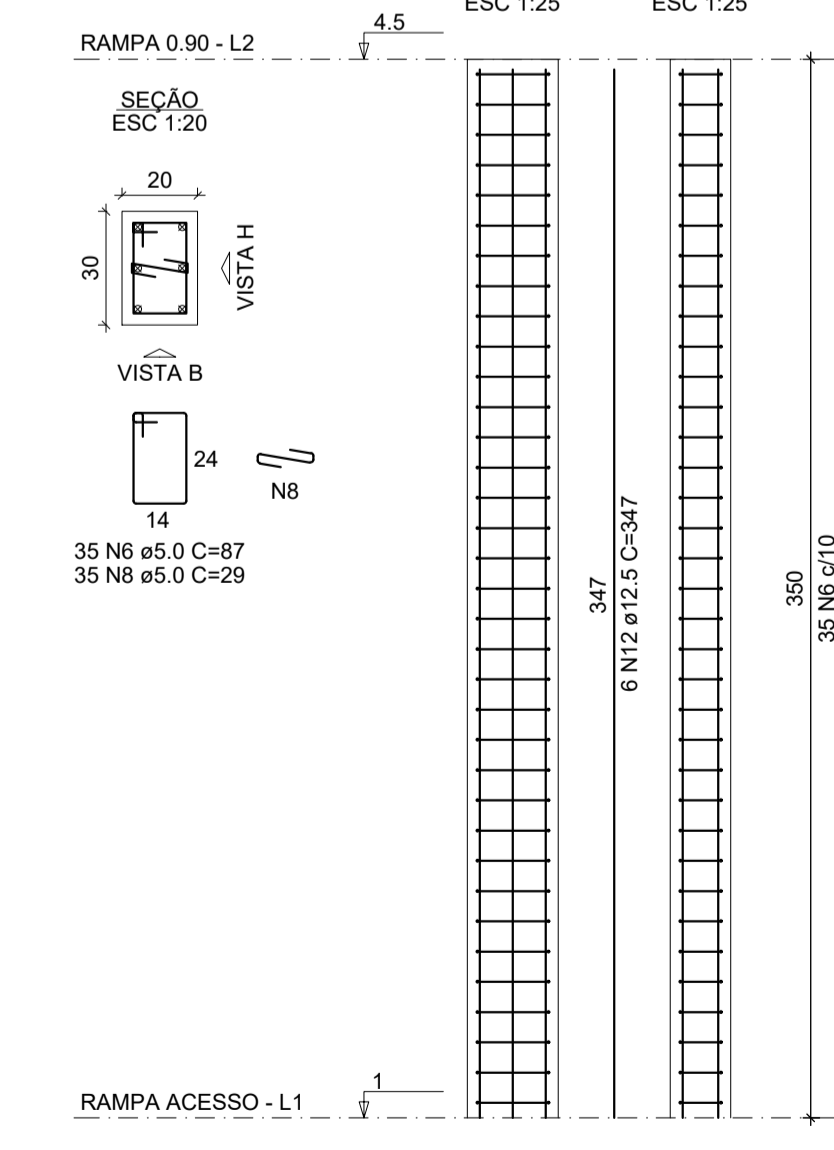
P31



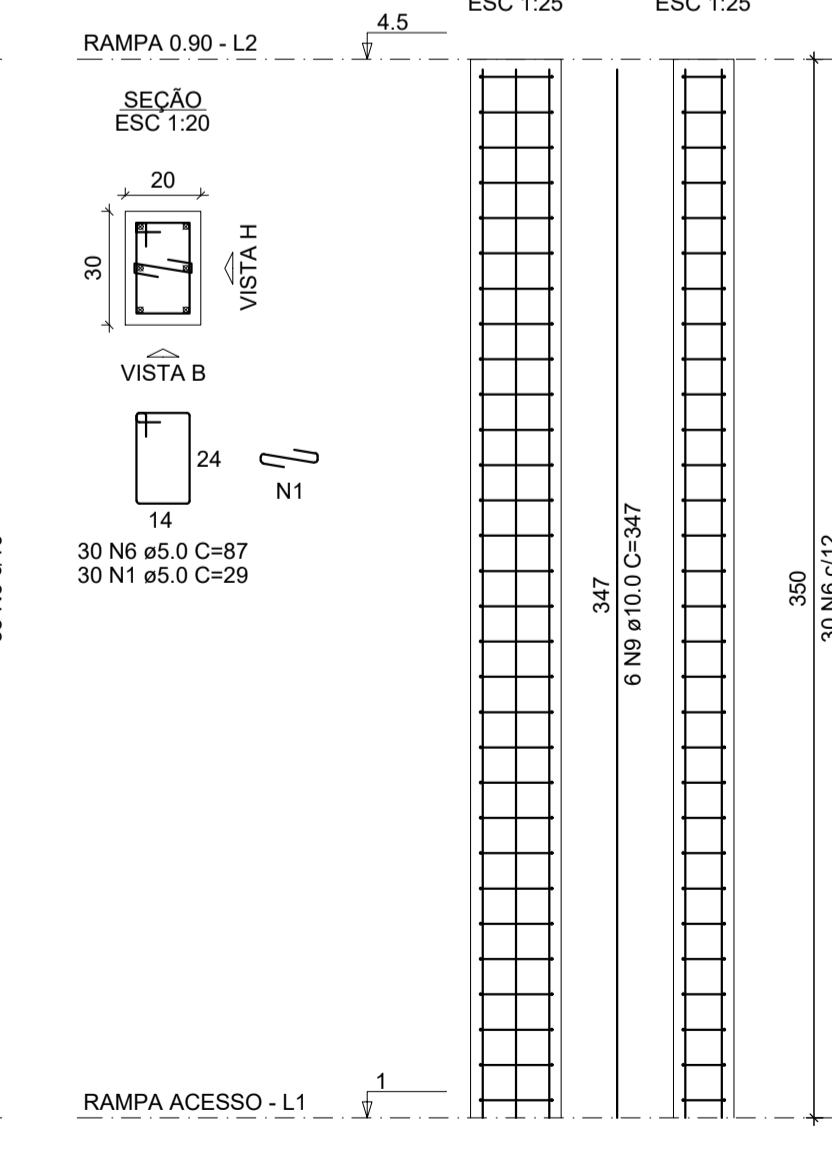
P32



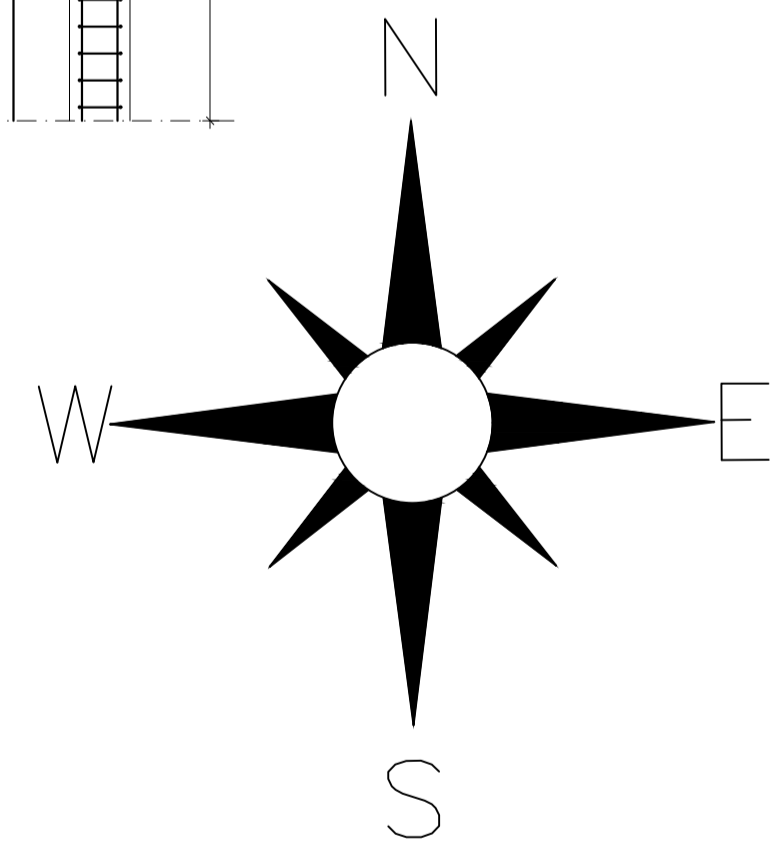
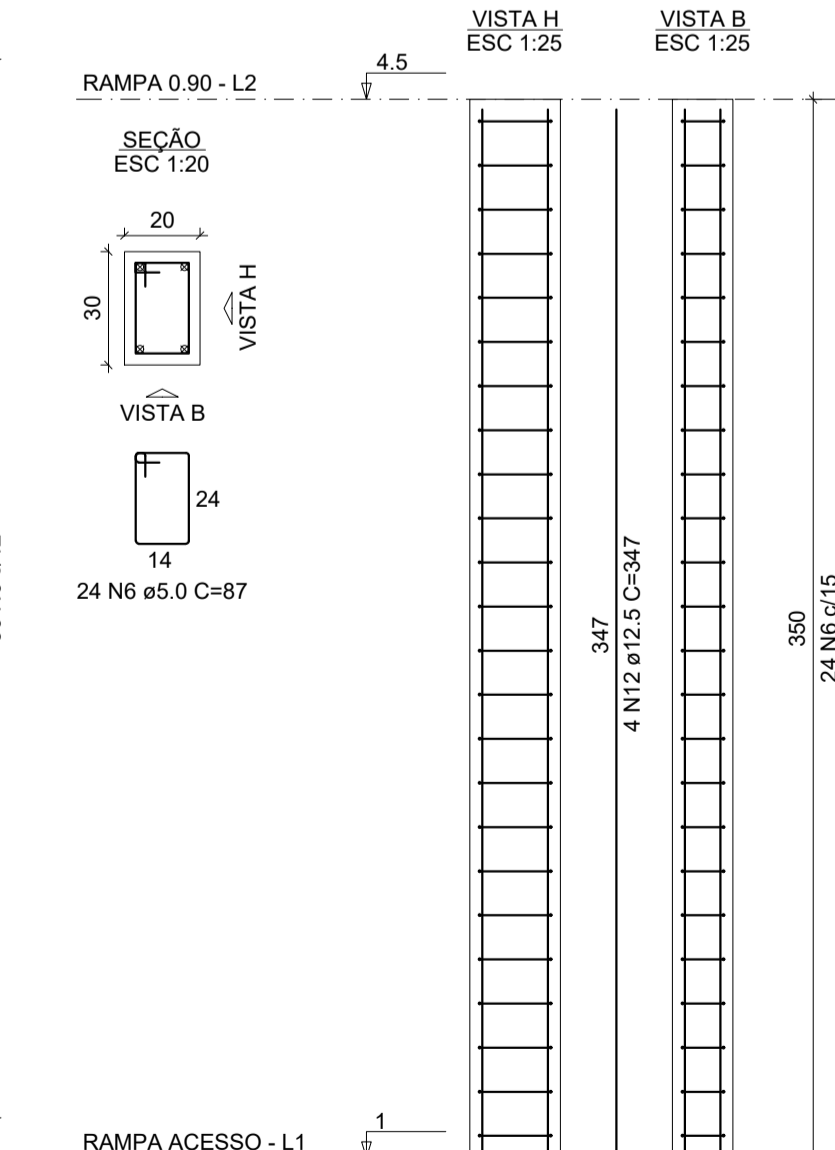
P33



P35



P36=P37=P38=P39=P40



		SVELTO MANUTENÇÃO ELÉTRICA LTDA CNPJ: 59.332.500/0001-73 IE: 3040004699 TELEFONE: 54 999537716 Avenida João Stella, nº 289, Centro, Protásio Alves - RS
OBRA: Entorno Escola Municipal Dr. Manoel Vieira da Fonseca - Andre da Rocha - RS	RESPONSÁVEL TÉCNICO: Eng. Civil Charles Furlan CREA/RS: 248121	
DESCRIÇÃO DA PRANCHA: PILARES - RAMP A		CONTRATANTE: Município de Protásio Alves CNPJ/CPF: 91.566.885/0001-46
DATA: 03/2026	ESCALA: INDICADA	TIPO DE PROJETO: ESTRUTURAL
PRANCHA: 03/06	REVISÃO: 00/00	