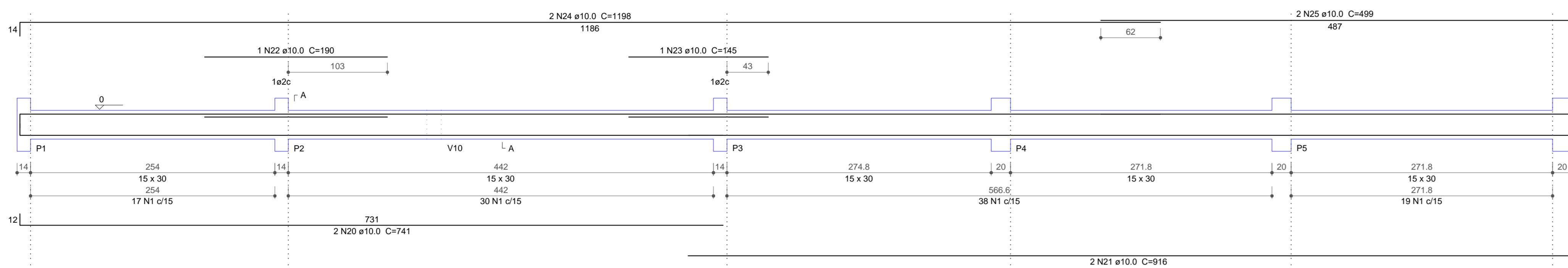
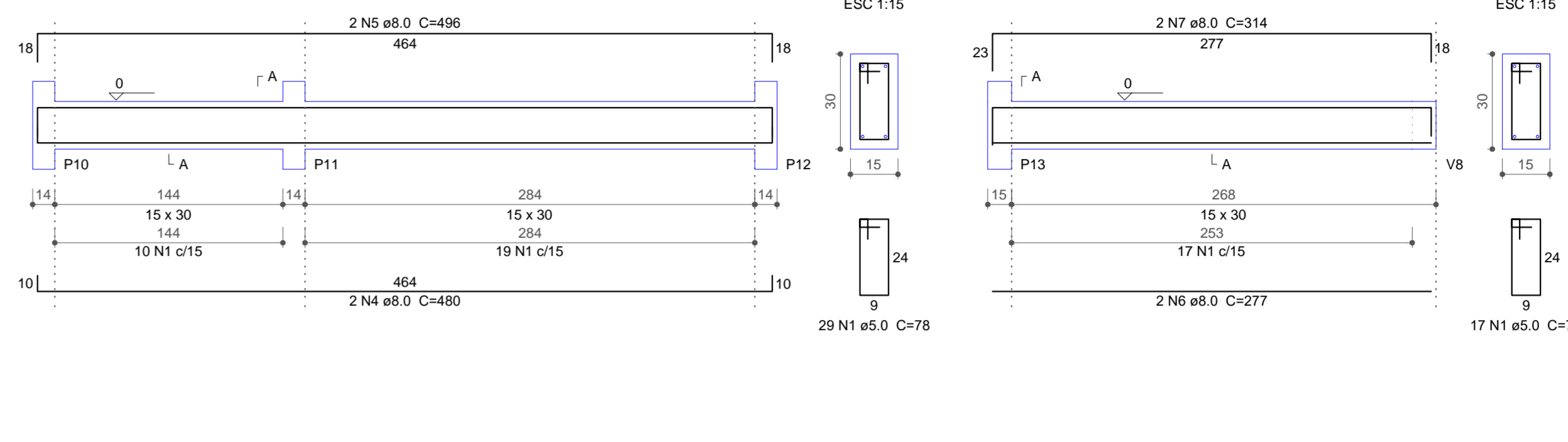


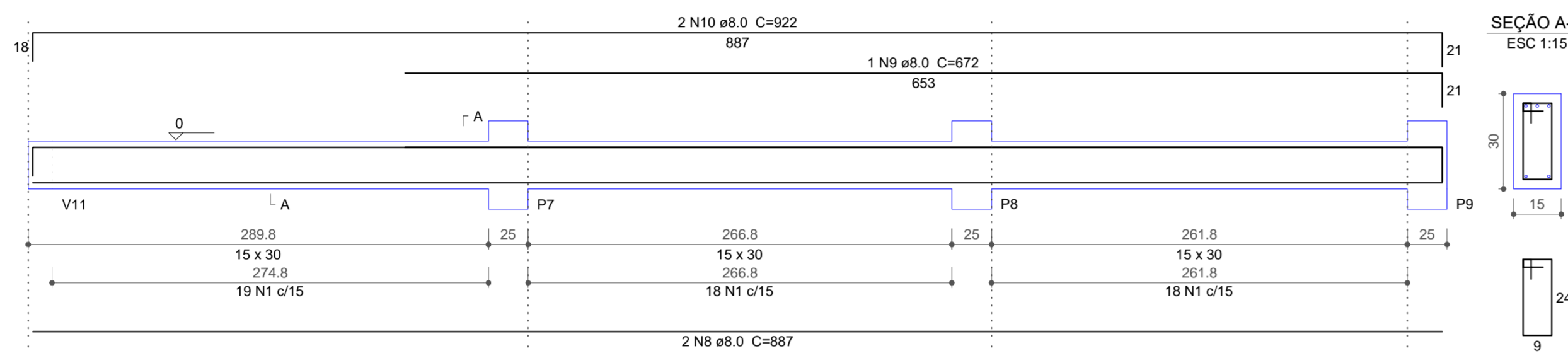
V1
ESC 1:30



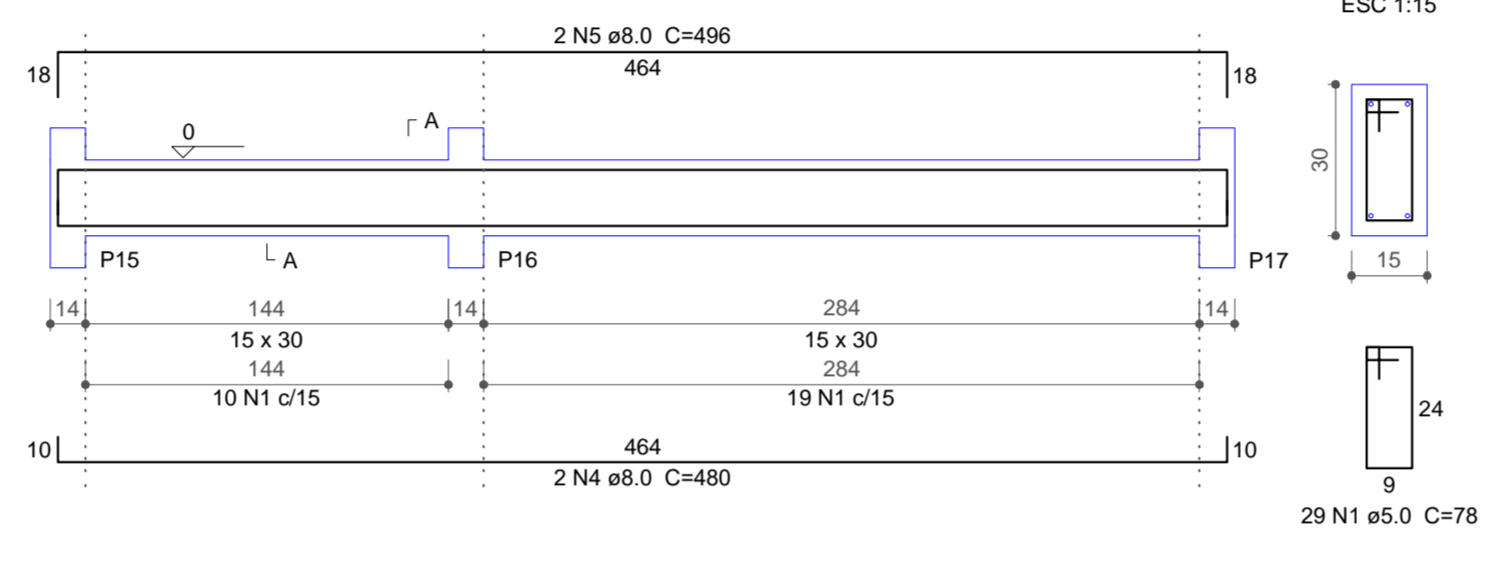
V3
ESC 1:30



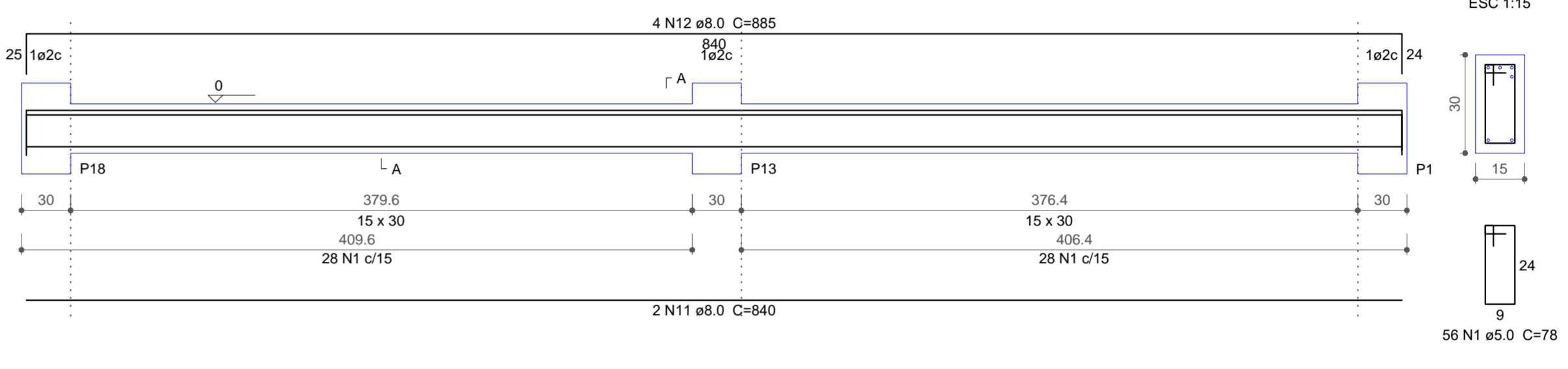
V2
ESC 1:30



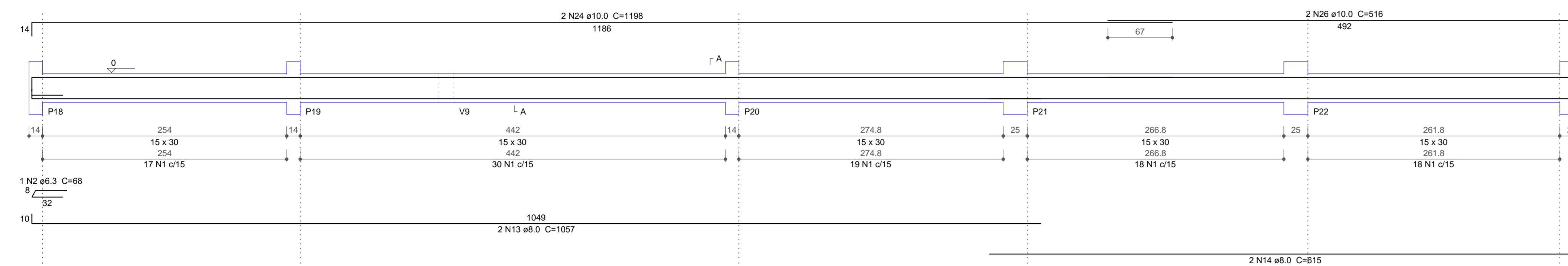
V5
ESC 1:30



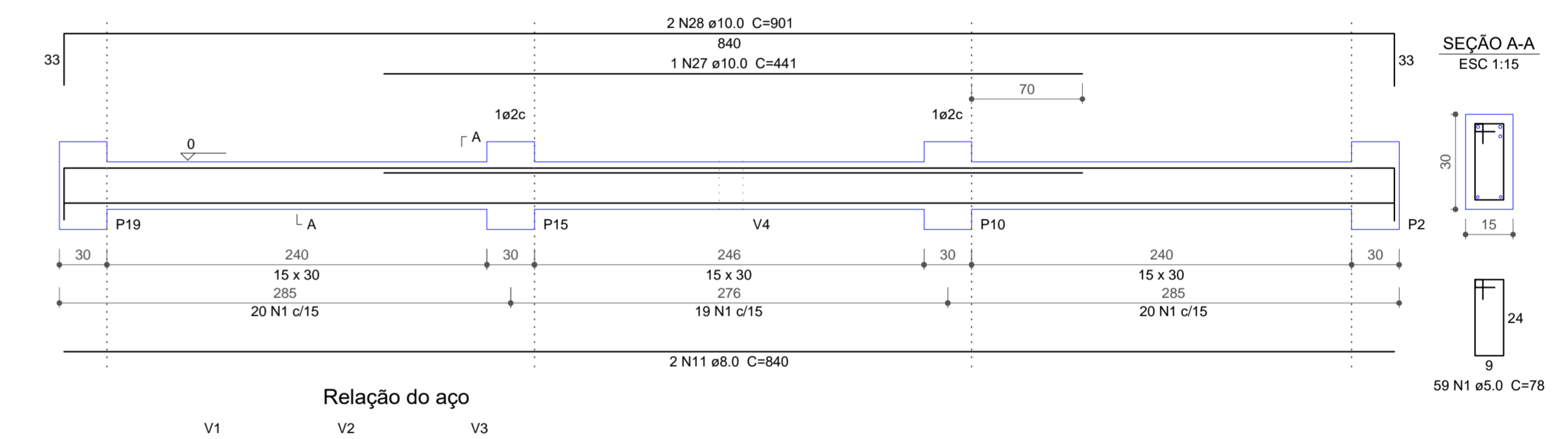
V7
ESC 1:30



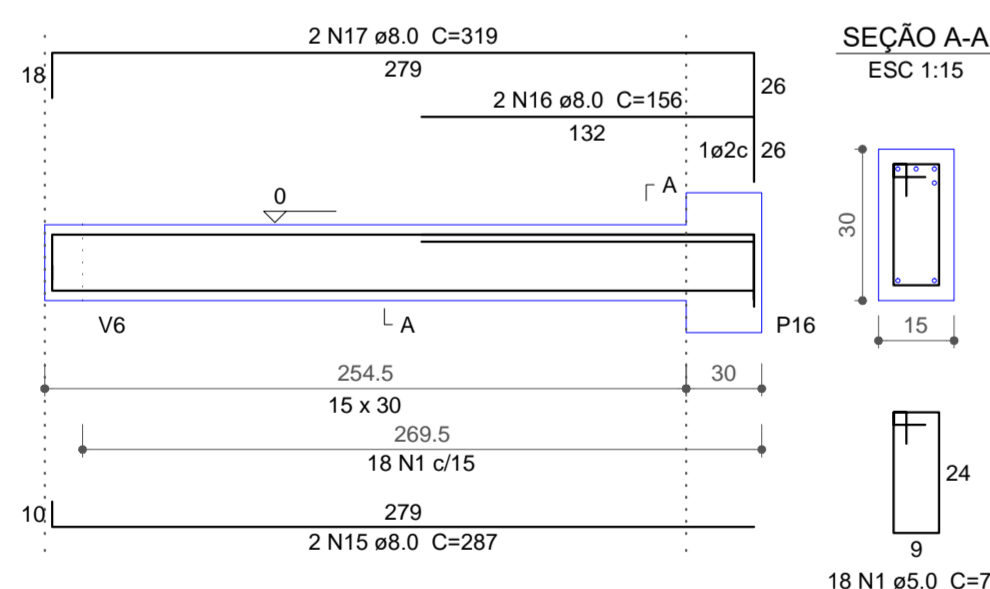
V6
ESC 1:30



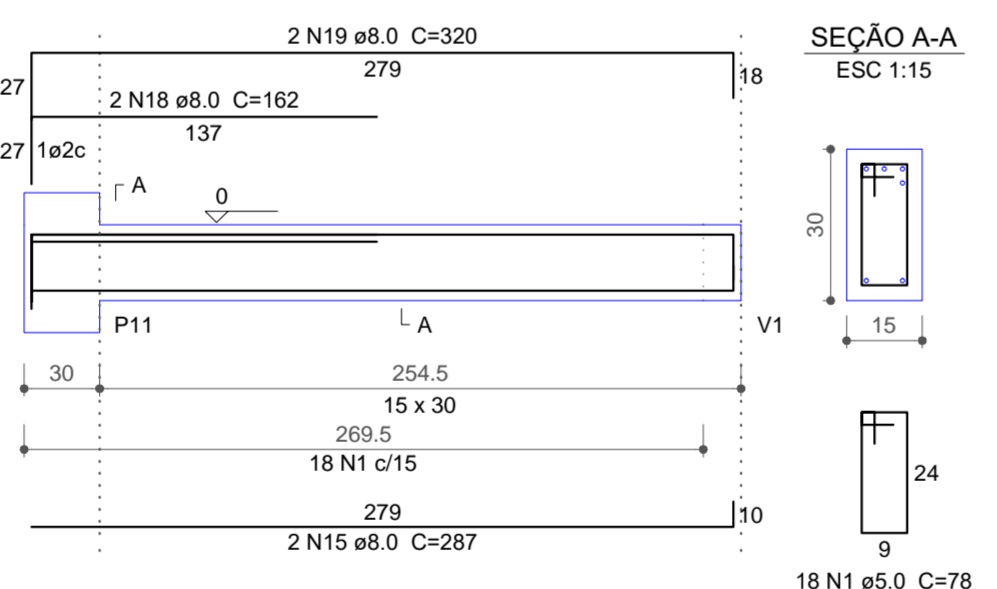
V8
ESC 1:30



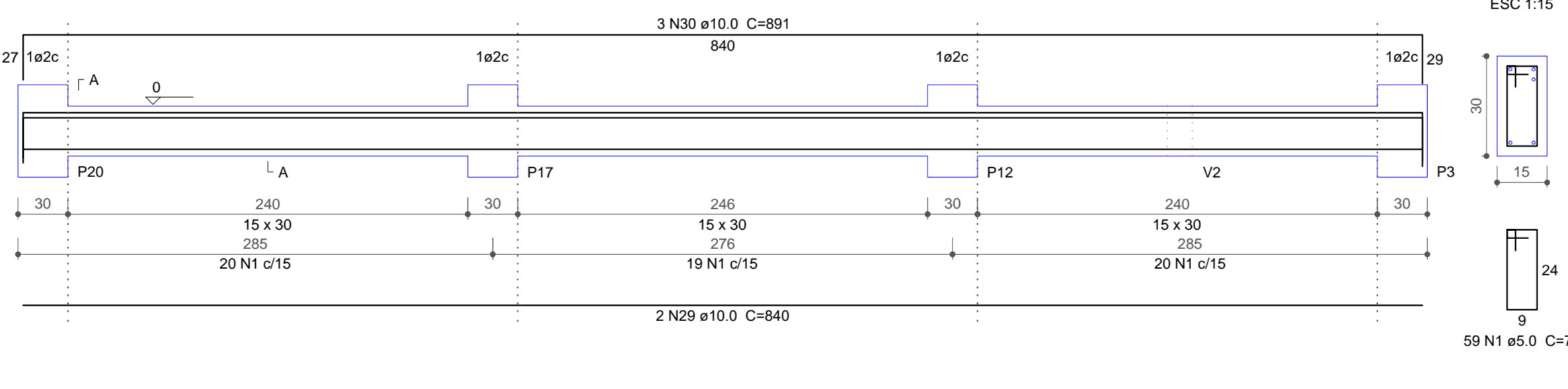
V9
ESC 1:30



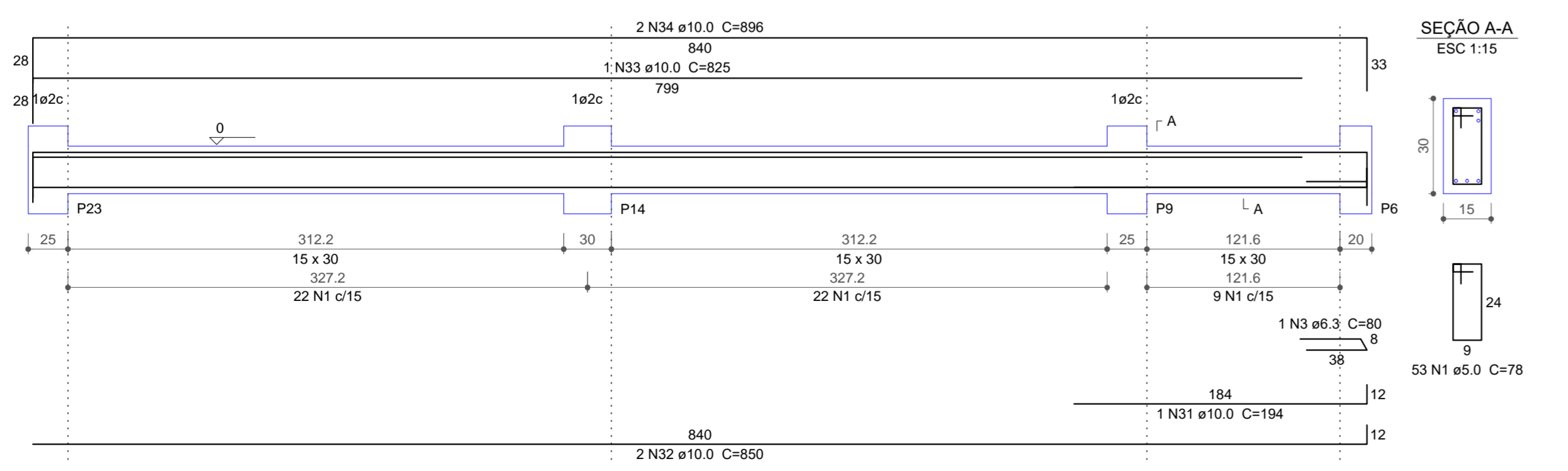
V10
ESC 1:30



V11
ESC 1:30



V12
ESC 1:30



Relação do aço

AÇO	N	DIAM (mm)	QUANT (Barras)	UNIT (cm)	C.TOTAL (cm)
CA60	1	5.0	599	78	46722
CA50	2	6.3	1	68	68
	3	6.3	1	80	80
	4	8.0	4	480	1920
	5	8.0	4	496	1984
	6	8.0	2	277	554
	7	8.0	2	314	628
	8	8.0	2	887	1774
	9	8.0	1	672	672
	10	8.0	2	922	1844
	11	8.0	4	840	3360
	12	8.0	4	885	3540
	13	8.0	2	1057	2114
	14	8.0	2	615	1230
	15	8.0	4	287	1148
	16	8.0	2	156	312
	17	8.0	2	319	638
	18	8.0	2	162	324
	19	8.0	2	320	640
	20	10.0	2	741	1482
	21	10.0	2	918	1832
	22	10.0	1	190	190
	23	10.0	1	145	145
	24	10.0	4	1198	4792
	25	10.0	2	499	998
	26	10.0	2	516	1032
	27	10.0	1	441	441
	28	10.0	2	901	1802
	29	10.0	2	840	1680
	30	10.0	3	891	2673
	31	10.0	1	194	194
	32	10.0	2	850	1700
	33	10.0	1	825	825
	34	10.0	2	896	1792

Resumo do aço

AÇO	DIAM (mm)	C.TOTAL (m)	PESO + 10% (kg)
CA50	6.3	1.5	0.4
	8.0	226.9	98.4
	10.0	215.8	146.3
CA60	5.0	467.3	79.2
PESO TOTAL (kg)			
CA50		245.2	
CA60		79.2	

Volume de concreto (C-30) = 4.19 m³
Área de forma = 69.77 m²

Prefeitura Municipal de
Campina das Missões

PRANCHA: **06**

E4

OBRA - Alojamento Feminino
ENDEREÇO - Linha Butiá Norte, Campina das Missões - RS
(EEM Casa Familiar Rural Filhos da Terra)
ESPECIFICAÇÃO - Estrutural / Det. Vigas de Fundação

Proprietário: Prefeitura Municipal de Campina das Missões	Resp. Técnico: Gabriel de Oliveira Eng. Civil - CREA/RS 168.937	ESCALA DESENHO: Indicada
ÁREA: 137,33 m²	DESENHO: Daniel	ESCALA PLOTAGEM: 20 / 1
	DATA: julho / 2025	REVISÃO: