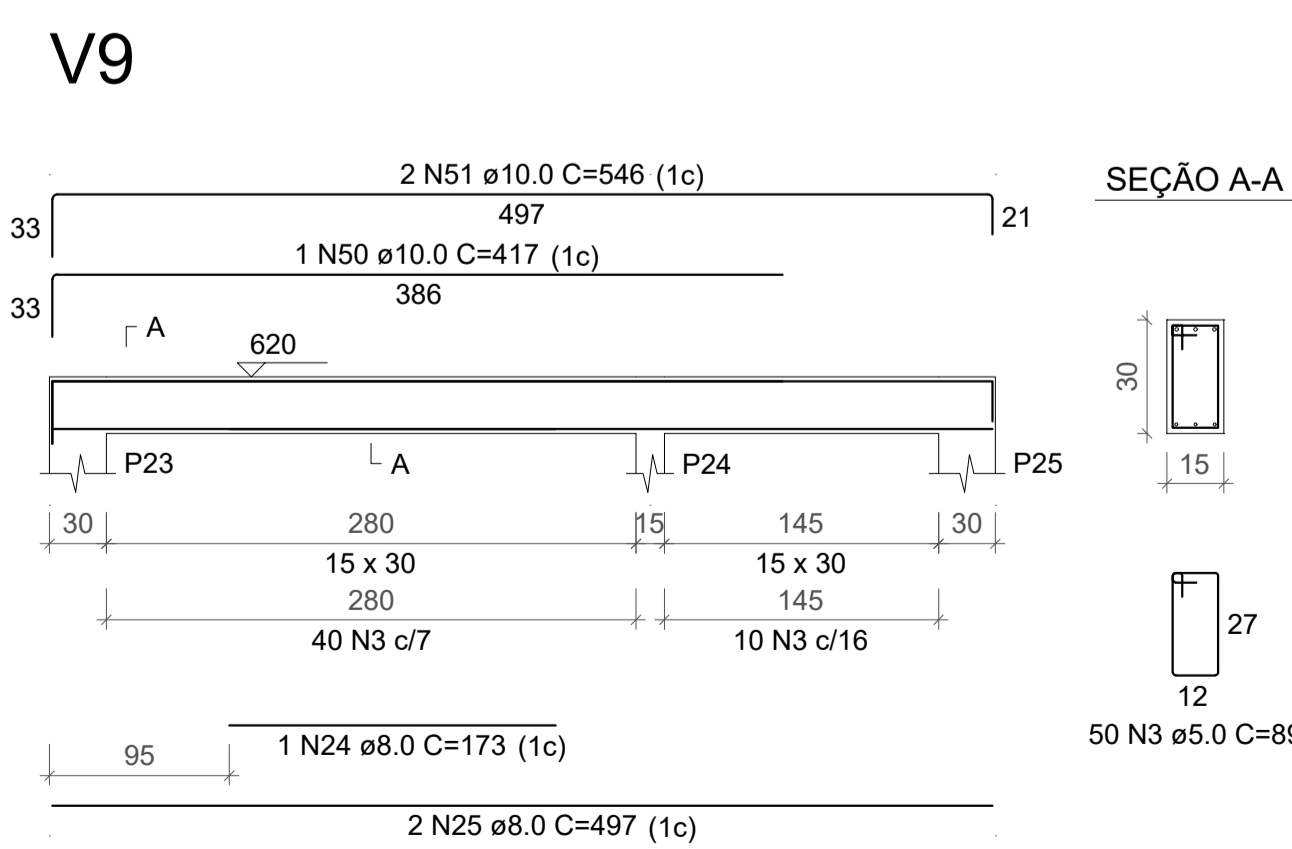
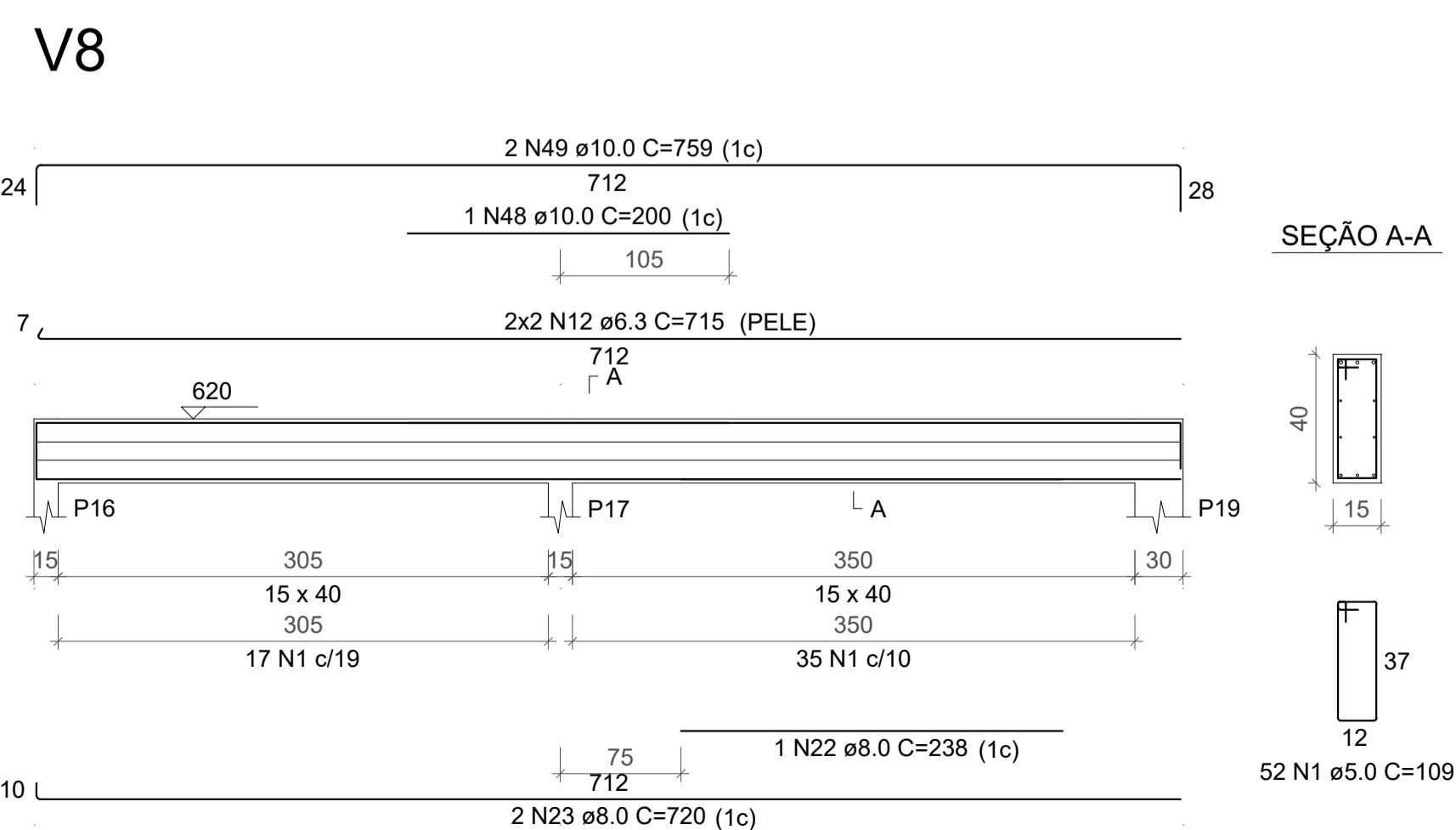
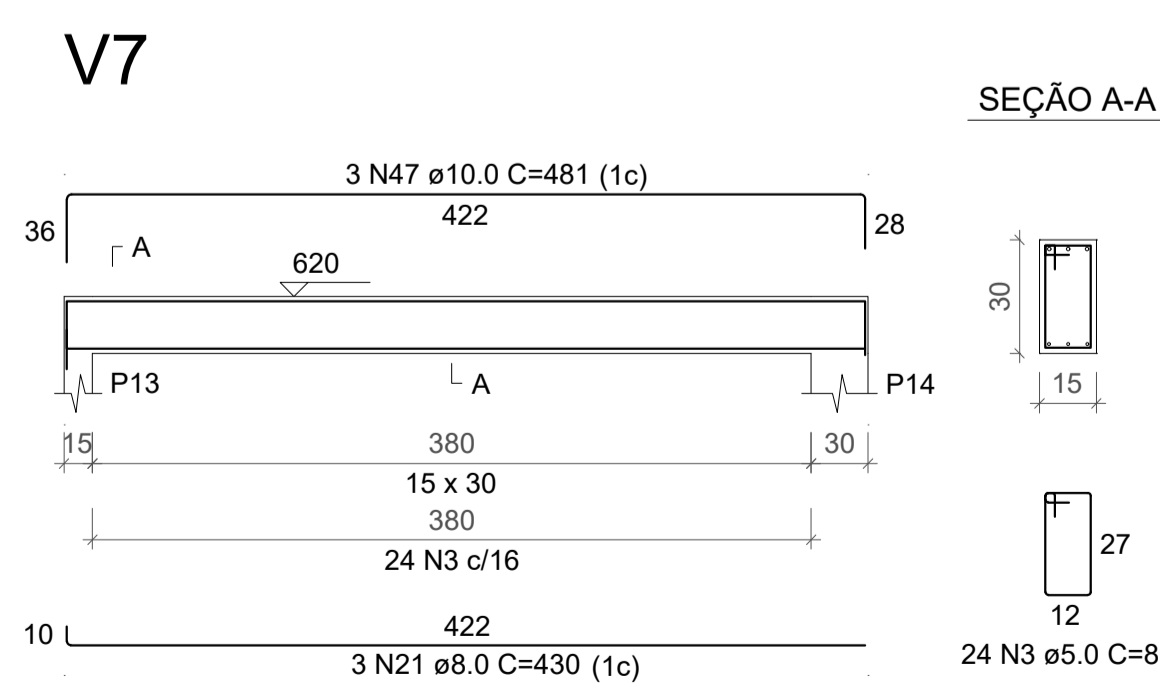
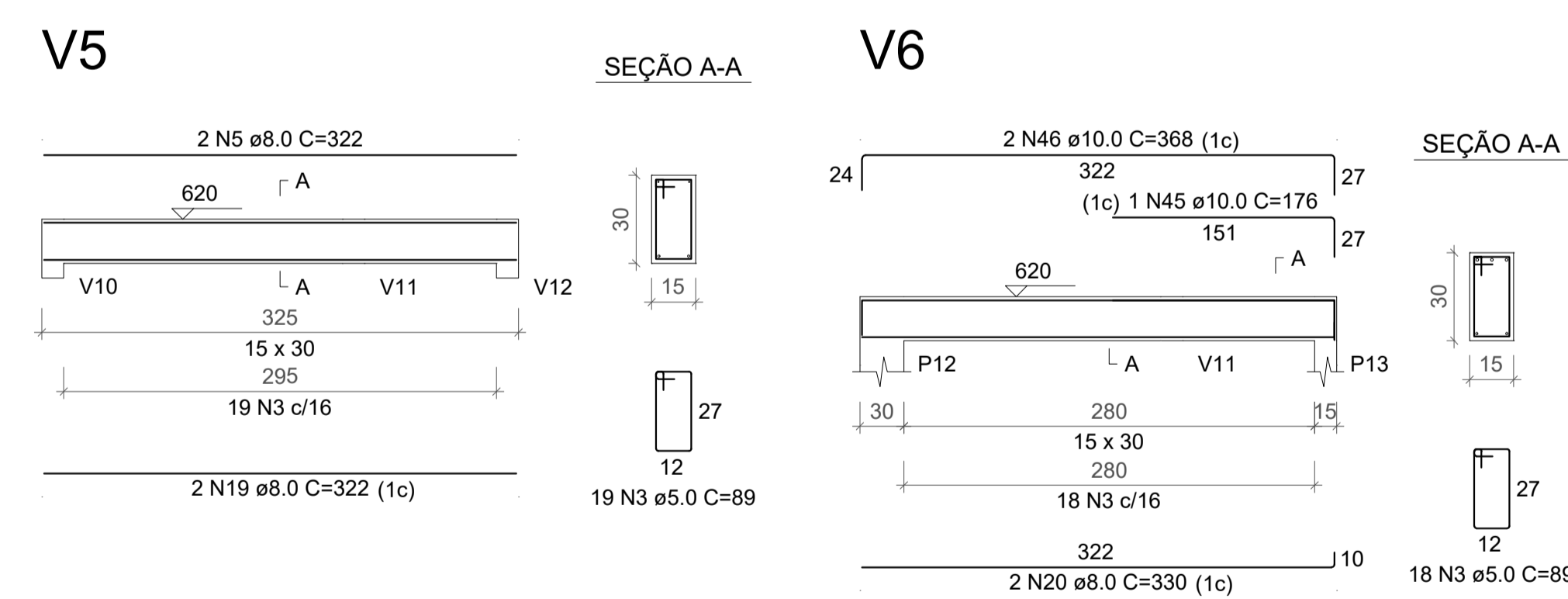
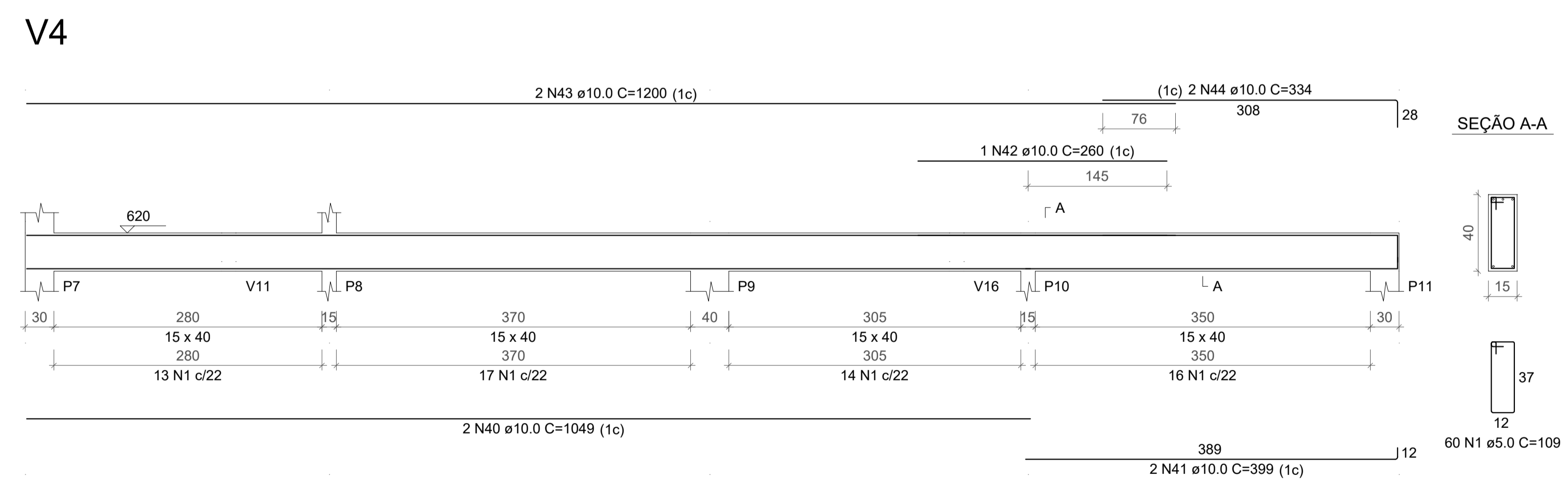
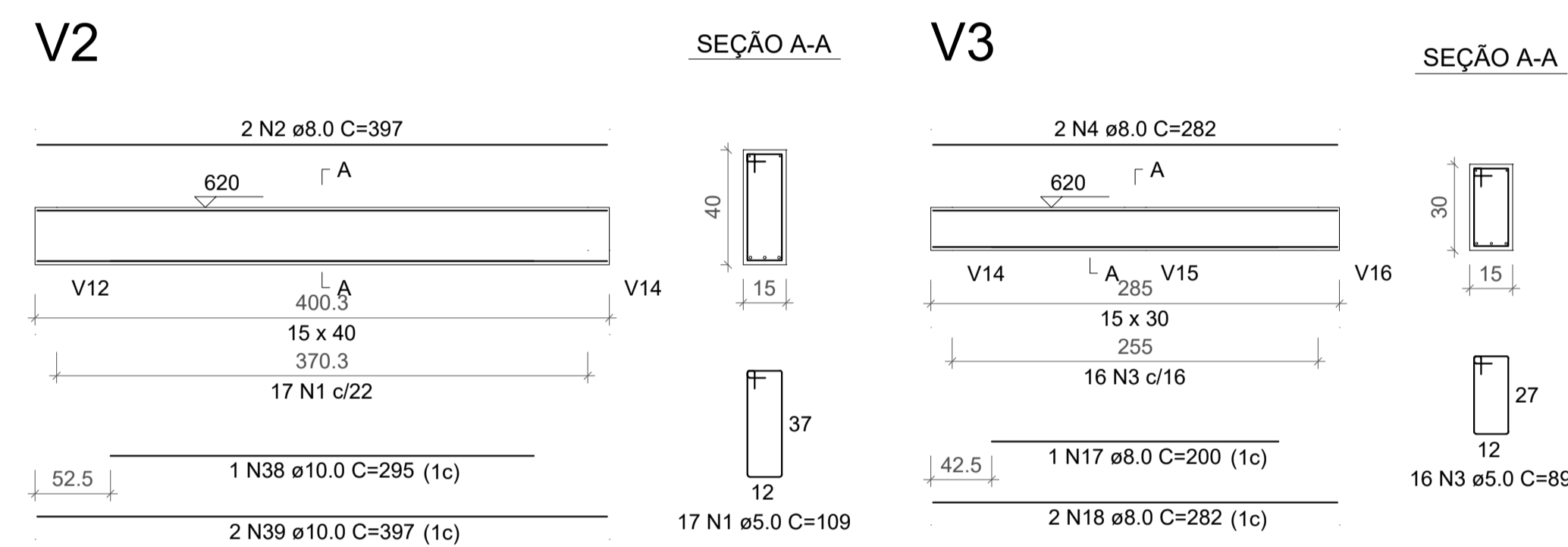
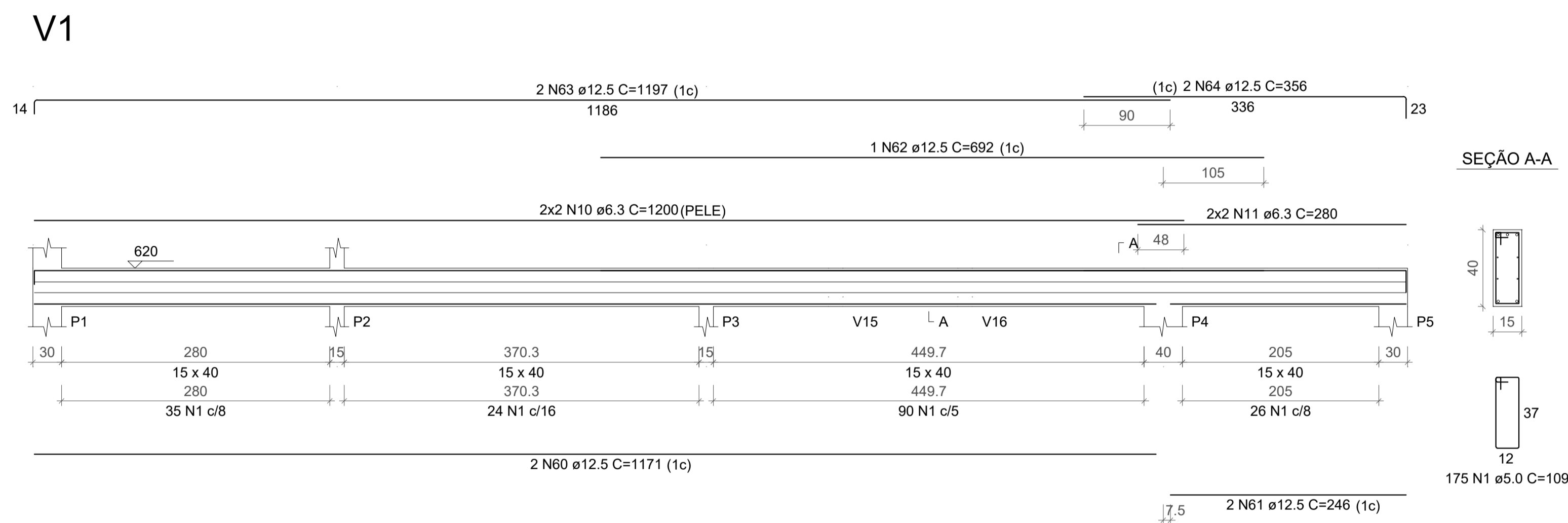


RESUMO DO AÇO

AÇO	DIAM (mm)	C.TOTAL (m)	PESO + 10% (kg)
CA50	10.0	327.9	222.4
CA60	12.5	30.8	32.6
CA60	5.0	673.7	114.2
PESO TOTAL (kg)			
CA50		255	
CA60		114.2	

Volume de concreto (C-25) = 3.72 m³
Área de forma = 73.78 m²



projeto	SEDE BRIGADA MILITAR DE PARAÍ-RS	
projeto	ESTRUTURAL	
endereço	ERS 438, PARAÍ RS	
autora do projeto	LUANA PIRES FROSI - Arquiteta e Urbanista CAU RS A286812-1	
área do projeto	256,30M²	data 07.2025
escala	INDICADA	folha